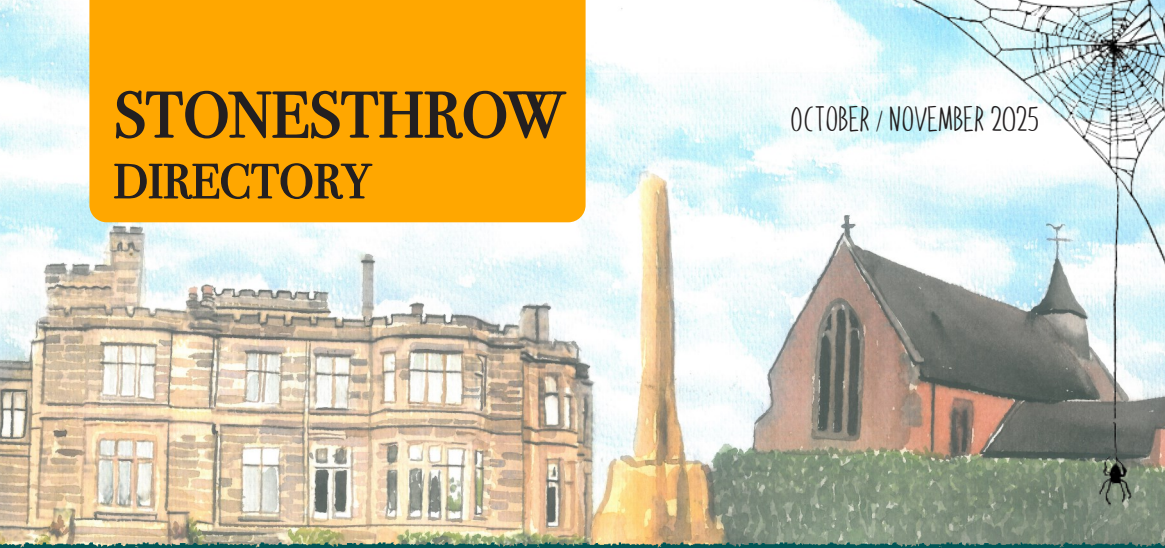


STONESTHROW DIRECTORY

OCTOBER / NOVEMBER 2025



BALSALL COMMON, MERIDEN, HAMPTON IN ARDEN, MILLISONS WOOD

Hand delivered free to 5,000 homes & businesses every 2 months

ELEVATE YOUR
BATHROOM SPACE

01676 292 500 | 07988 773 899
WWW.KSINTERIORS.UK | INFO@KSINTERIORS.UK



MORE ON PAGE 16

Local Businesses | Local News & Events | Local Stories

JAMIESON CHRISTIE
WEALTH MANAGEMENT



**SEE
BACK PAGE
FOR MORE
DETAILS**

INVESTMENTS, PENSIONS, TAX PLANNING

ESTATE and IHT PLANNING, EDUCATIONAL FEES, EMPLOYEE BENEFITS

Window & Door Repairs & New Installations



- Misted/Steamed Up Windows
- Broken Glazing
- Broken Hinges, Handles & Locks
- Poorly Fitting Windows & Doors
- Locks Fixed



Great Service
& Quality
Workmanship
Guaranteed



New Windows & Doors

- UPVC
- Aluminium
- Timber
- Composite



Call Paul At Homeseal Today For Your
FREE No Obligation Quotation
Tel: 024 7646 6260 Mob: 07976 710463
www.homesealimprovementsltd.co.uk



Aquarius Interiors

Get your home Christmas ready with us.

Whether you're looking to refresh your soft furnishings or update your wall treatments, we're here to help you create a home that feels magical this festive season.



Did you know that the right curtains can actually help lower your heating costs?. Our thermal curtains not only look great but keep the warmth in your home where it belongs.

Our new Coventry showroom will be showcasing a full range for motorised blinds and shutters in Coventry.

Opening 19th October at Pilot Business Park

Visit our showroom or get in touch to see how we can help transform your space in time for Christmas!

KENILWORTH Showroom

Tel: 01926 359096

COVENTRY Showroom

Tel: 024 7771 7517

www.aquariusinteriors.co.uk



Please mention Stonestrow Publications when calling advertisers

A NOTE FROM THE EDITOR

Welcome to the October/November Edition.

October is the perfect month to head out for a day trip to a local beauty spot, to the park, to a wood, or forest or to a stately home. The air is crisp and clean and the sunlight inspiring as the vistas invite us to sit a while and take in the beauty around us.

'Remember, remember the fifth of November' is something all children learn at school. It commemorates an assassination attempt on King James I by Guy Fawkes who planned to blow up the Houses of Parliament with barrels of gunpowder. So, around the country on the fifth an effigy of Fawkes is burned on bonfires whilst spectators enjoy fireworks and eating baked potatoes and traditional toffees.

On Remembrance Day we remember all those who gave their lives to secure the freedoms from tyranny that we continue to enjoy. Many of us have relatives who fought in the First or Second World War or subsequent conflicts and at this time of year we take the time to think about their sacrifice.

Although the days might be getting shorter and the weather colder, wetter and more changeable there is plenty going on this Autumn.

If you would like to promote a business locally - we would love to help by bringing a wealth of knowledge and experience in connecting businesses with local communities, creating eye-catching adverts and making sure each door gets a copy of their directory full of local talent. Give us a call or email for a friendly chat. We are a small local business too, we only thrive if your business thrives, so we do our best to make sure you are seen and recognised by local residents who receive, read, retain and reference Stonesthrow Directories.

Here are some dates for your calendar: 26th October - Daylight Saving Time ends; 31st October - Halloween; 5th November - Guy's Fawkes Day; 9th November - Remembrance Day.

As always, we ask you to please remember to mention Stonesthrow Directories when calling our Advertisers.

However you decide to spend next couple of months - keep your heart and your business local.

Yours, Stonesthrow Publications.

01926 8000 84 / 075 111 222 45
INFO@STONESTHROWPUBLICATIONS.CO.UK
WWW.STONESTHROWPUBLICATIONS.CO.UK

Stonesthrow
Publications

CONTENTS IN THIS ISSUE

GET CREATIVE THIS HALLOWEEN

14



20

USEFUL LOCAL TELEPHONE NUMBERS



GET WALKING THIS AUTUMN

10



26

LOCAL RESTAURANTS & TAKEAWAYS



24

HOROSCOPES



WHAT'S ON LOCALLY

22-23



NEXT DEADLINE
DEC / JAN EDITION
20TH NOVEMBER



THIS MAGAZINE IS FULLY RECYCLABLE. PLEASE KEEP
UNTIL THE NEXT COPY ARRIVES IN 2 MONTHS TIME



STONESTHROW_PUBLICATIONS



STONESTHROWPUBLICATIONS

We gratefully acknowledge the support of businesses and organisations, whose adverts or information appear in Stonesthrow Publications Ltd. Whilst every effort is taken to ensure the accuracy, we can not accept responsibility for loss, damage or omission caused by error in the printing of an advert or an article. Nor can we accept responsibility for claims made by advertisers/contributors, or services, provided by the advertisers. It is the responsibility of the advertiser to make sure, that the information they provide is correct and up to date at the time of the publication. No part of this directory can be reproduced, copied or stored without the prior written permission of the Stonesthrow Publications Ltd. The use of this magazine for direct marketing or canvassing is strictly prohibited. Distribution area and day may vary at the discretion of the publishers. All artwork, pictures and text are accepted on the basis, that permission for their use in the publication has been obtained by the advertiser or contributor. Stonesthrow Publications Ltd can not accept responsibility for alterations or changes of details after the publication date. **Stonesthrow Publications Ltd**



TAMARIND
EAT. DRINK. RELAX

BOOKINGS NOW BEING TAKEN FOR
CHRISTMAS PARTIES

"Perfect place to celebrate the festive season".
(Party menu available)

CHRISTMAS DAY LUNCH

£50 per adult | £30 per child (Under 10's)
(£10 per head deposit required)

Tel: 01676 533 308 | www.cafetamarinds.co.uk
376 Kenilworth Road, Balsall Common
Coventry, CV7 7ER

Leading the way in providing an AFFORDABLE PROFESSIONAL service



WESTMINSTER LAW

Wills~Estate Planning~Probate



**If you are over 60
it will cost you just £95*
for us to prepare your Will.**

We are also Lasting Power of Attorney
Specialists - only £110* each LPA if
instructed during the Will appointment.

***Our prices include free home visits*,
VAT* and Inheritance Tax advice.***

Call us now for a no obligation chat
on: **02475 100099**

www.westminster-law.co.uk ~ Coventry office email: dr@westminster-law.co.uk

Westminster Law Group Ltd ~ Registered Office: Wellesley House, 204 London Road, Waterlooville PO7 7AN

*These very special rates are only available if you are over 60 years old. Minimum spend for a free home visit is £95.

Our normal price for a standard single Will is £150, or £250 for a couple. VAT, when applicable, is included in our prices.

Office of the Public Guardian (OPG) registration fee, when applicable, is not included in these prices.

Please mention Stonestrow Publications when calling advertisers

Volunteers Wanted

Would you like to be an Older Friend
to a child for regular outings of just 2-3 hours?

For more details and an application form, please contact:

0845 838 2098*

Volunteer Chris tells us about his role as a friend to a child in need of friendship due to the difficult circumstances he has grown up in.

I first met Luke when he was 10 years old. I remember the impression of a quiet boy that really needed to be liked. He was sensitive, intuitive and in those early years would often give me pictures that he had drawn for me when I picked him up each week. He enjoyed physical activities, we played football and tag in the park, went swimming, cycling and walking. He also liked to talk and I would ensure that either during or around these activities we always had time for conversation.

I focused on being a friend and not a parent, but I would often steer our conversations towards what type of person he wanted to be and whether he had been heading towards or away from being that person in the past week. In his early teenage years, he would often skulk out of his home with his hood pulled over his face and grunt at my questions as we drove to our activity

that week. But by the time we arrived at our destination and as we unloaded bikes from the car or set off on our walk he would open up, and our conversations would often be quite serious about his feelings, how he should react in some of the different situations that he was encountering.

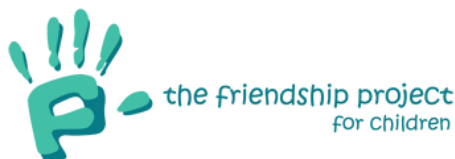
I always enjoyed our conversations, although I often felt that he did not listen or rejected some of what I suggested. But then I would hear my words repeated back to me, often weeks later, or he would describe to me how he had changed his behaviour or tried something that I had suggested instead of just thumping someone.

Friendships have to finish on the younger friends 17th birthday. I always expected it to finish earlier than that - hanging around with a 60 year old man is not very cool for a teenage boy. Our friendship just seemed to get stronger and stronger and I will keep in contact with him.

I have a new young friend now. He is 7 years old and a very different character to Luke. I am both excited and nervous as I set out on this completely new adventure with my new friend.

Chris

*If you would like to find out more about
volunteering for the Friendship Project for
Children then give us a call on 07516 527714
www.friendshipproject.co.uk/*



Cabinmaster



SCAN ME

Cabin Master Village, 251 Toton Lane, Stapleford, Nottingham NG9 7JA
Studley Garden Centre, Henley Road, Studley B80 7DR

Open 7 Days A Week • Free Site Survey • Free Design Service

0115 932 8888 | 01926 757975



SCAN ME



Over 20 years in
business



Manufactured in
Derbyshire, UK



10 year manufacturer's
guarantee

Please mention Stonestrow Publications when calling advertisers

YOUR LOCAL FAMILY LAW SOLICITORS

BRINDLEY
TWIST
TAFFT
& JAMES

SOLICITORS

Our Services:

- Divorce and Separation
- Financial Settlements
- Cohabitation
- Pre-Nuptial Agreements
- Children
- Emergency Injunctions



We can also help with:

Wills - Lasting Powers of Attorney - Probate - Conveyancing - Commercial Property - Corporate & Commercial -
Employment - Medical Negligence - Personal Injury - Dispute Resolution - Notarial Services

www.bttj.com - 01676 533755 - enquiries@bttj.com

2 Meeting House Lane, Balsall Common, CV7 7FX - Offices also located in Coventry, Warwick & Southam

YOUR LOCAL RELIABLE EXTERNAL CLEANING SPECIALISTS



WHAT CAN WE CLEAN FOR YOU?

Our Cleaning Services:

- | | |
|------------------------|---------------------|
| ✓ ROOFS | ✓ PATIOS |
| ✓ GUTTERS INSIDE & OUT | ✓ MOSS REMOVAL |
| ✓ FASCIAS & SOFFITS | ✓ STONWORK |
| ✓ DRIVEWAYS | ✓ RENDER & CLADDING |
| ✓ CONSERVATORIES | ✓ SOLAR PANELS |

CALL NOW FOR A FREE QUOTE



0121 369 0070  
07546 264164

✉ enquiries@solclean.co.uk 🌐 www.solclean.co.uk



VIEW SOLCLEAN ONLINE





Resin Drives



Tarmac Drives



Luxury Patios



Steps



Astro Turf



Block Drives & Paving

- ✓ BLOCK DRIVEWAYS & PAVING
- ✓ RESIN DRIVEWAYS
- ✓ TARMAC DRIVEWAYS
- ✓ LUXURY OUTDOOR PATIOS
- ✓ STEPS TO FRONT DOORS
- ✓ DECORATIVE WALLING
- ✓ LANDSCAPING
- ✓ ASTROTURF
- ✓ FENCING

For a FREE, NO OBLIGATION quotation call:

T: 01926 674 782 M: 07961 358 367

projectspaving@icloud.com

www.projectspaving.co.uk

328 Alcester Road, Wythall, Birmingham B47 6JR



GET WALKING

THIS AUTUMN

Whether alone, accompanied by your dog, or within a group, a country walk is good for mind, body and soul.

So shop locally to get the equipment and provisions you need and get exploring, because the great outdoors really is... great!

WHY WALK

Much is made of the benefits walking brings, and there is a reason for that.

Firstly, it's free, which means anyone can do it. It's also low impact, so doesn't put a huge strain on your bones or muscles, making it ideal for those who aren't in peak fitness or have mild mobility issues.

Of course, we all know walking can improve mental health, and if combined with a social aspect (like within a walking group), can really provide simple pleasure and joy.

Other health wins include strengthening the cardiovascular system, significantly reducing the risk of serious conditions, including heart disease and strokes.

Plus, as winter unfolds, the risk of colds and flu intensifies, so engaging in regular walking activities strengthens and invigorates your immune system, transforming it into a formidable defence against these seasonal adversaries.

Finally, as a natural weight-bearing exercise, walking plays a crucial role in maintaining bone health.

GETTING STARTED

To embark on your walking journey, equip

yourself with snug shoes for foot comfort and don appropriate warm clothing to shield against the brisk winter temperatures.

Lightweight waterproofs are handy in case of a shower, and a water bottle for hydration is key, along with a couple of healthy snack bars if you're planning on going a few miles.

Keep motivated by using a pedometer (most smartphones have these inbuilt) and ensure you have access to either a map, guidebook or a GPS app that doesn't require phone signal.

Treats and a water bowl will be key if you're taking a furry friend, and if you're grappling with a long-term condition, the CSP (Chartered Society of Physiotherapists) website offers insightful advice on aligning activity with your needs.

MAKE IT FUN

Though solitude can be a positive aspect of walking for some, for others the activity can be a fantastic way to meet new friends. Unlike cycling clubs or sports teams, walking is an activity those who are less athletic can enjoy while also allowing for conversation and connection on the way. So check out local noticeboards or online resources to find suitable groups aimed at your ability, age bracket, fitness level or similar interests.

Finally, planned walking outings often end on, or have in the middle, a trip to the pub for food and drinks. This allows you to replenish those calories you've lost, slake your thirst, and properly get to know your new buddies. Now that's an exercise regime few can sniff at!



Homewood, Leamington Spa

Residential care home

MHA is a charity with over 75 years' experience providing quality care and supporting families.

Situated in beautiful grounds, we offer:

- Long-term and respite care
- Personalised care in a safe environment
- En suite bedrooms and home cooked food
- A chaplain, hair salon and lots of activities

Get in touch for more information

01926 423519

www.mha.org.uk/homewood



Please mention Stonestrow Publications when calling advertisers

GET PAID TO GET FIT!

JOIN OUR DELIVERY TEAM!



Adults and kids over 13 years old.

Please enquire:

INFO@STONESTHROWPUBLICATIONS.CO.UK

TRADES ADVERTISE HERE

from just **£26**

+VAT per month



01926 8000 84

075 111 222 45

info@stonestrowpublications.co.uk



Aquarius Interiors

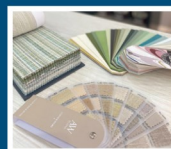
Add Colour & Character
for **Christmas**

**VISIT THE SHOWROOM OR BOOK
A CONSULTATION TO EXPLORE
COLOURS AND PATTERNS.**

KENILWORTH Showroom Tel: 01926 359096

COVENTRY Showroom Tel: 024 7771 7517

www.aquariusinteriors.co.uk





Rightio Plumbing & Heating

01564 719 054

We work in **Meriden, Balsall Common, Hampton in Arden, Berkswell** and all surrounding areas.

COMPETITIVE RATES

- ✓ Fast Response
- ✓ All Work Guaranteed
- ✓ Flexible Appointment Times

▶ **12 Month** ◀
guarantee
on labour!
Excludes blockages

▶ **OAP** ◀
Discount
Speak to
us today!

▶ **1-2 Hour** ◀
Emergency
Response
time!



OUR SERVICES

- ✓ Boiler Breakdowns
- ✓ Boiler Servicing
- ✓ Radiators & Pipes
- ✓ Tanks & Cylinders
- ✓ Toilets & Taps
- ✓ Leaks & Bursts
- ✓ Showers
- ✓ Clearing Blockages
- ✓ Pipework Replacement
- ✓ Gas Safe Certified

IS YOUR SOFA LOOKING TIRED & SHABBY? CANNOT AFFORD TO BUY BRAND NEW?

*Complete upholstery & re-upholstery services for
traditional & contemporary pieces in fabric & leather*

SPECIALIST LEATHER REPAIR:

*Professional cleaning & stain removal
Scuffs, cat scratches, burns
Colour loss restored
Panel replacement
Aniline restoration
Large range of fabric & leather*

UPHOLSTERY:

*New seat cushions
New springs / webbings
Frame repairs
Free inspection
All work guaranteed*



Mark Miller

Leather Cleaning & Repair

Undertake Commercial & Domestic Upholstery

01455 612730 / 07949 606949

www.leathercleaningandrepair.co.uk





GET CREATIVE

THIS HALLOWEEN

Make this Halloween one to remember with these brilliant events potentially be hosted in your community... and if they're not, how about doing it yourself!

TRICK OR TREAT TRAIL It is not unusual now for local businesses to club together for a Halloween Trail, whereby children follow a map collecting sweets and clues on the way.

If there isn't a trail in your area, why not suggest one to your neighbours - a great way to create community spirit and bring joy to your little monsters.

CHARITY EVENT Find or host a charity event with a spooky twist. This could include a haunted fun run, a bake sale featuring Halloween treats, or even a fancy-dress ball.

Encourage participants to donate to a local cause while enjoying the festivities... this is also a great excuse to bust out that mummy costume you've been working on!

ESCAPE ROOMS Most local Escape Rooms will have a dedicated Halloween experience where Participants can work together to solve puzzles, unlock secrets and 'escape' before time runs out.

You can also create your own room at home, choosing themes like haunted mansions, cursed libraries or abandoned laboratories.

A DEADLY DINNER Host a murder mystery dinner with a Halloween twist. Design a script featuring eerie characters and invite participants to dress up and solve the mystery. Either do this at home with your friends, or create a community event

at your local hall.

GHOST TOUR If your town boasts historic sites or heritage landmarks, Halloween is the perfect time to explore their spooky stories. Organise guided ghost tours, sharing local legends and mysteries. This idea combines education with entertainment, making it an excellent option for all ages.

PUMPKIN PICKING Following in the footsteps of our American friends, pumpkin patches have been popping everywhere.

A brilliant day out for the kids, these events allow you pick your own pumpkin, indulge in some spooky crafts and enjoy festive seasonal such as toasted marshmallows and pumpkin spiced lattes.

SILENT DISCO So as not to wake the dead, dance with headphones on your head. That's right, silent discos are not only an easy and affordable way to take a party anywhere, they also won't annoy the local terrors (like moody Martin who lives upstairs).

HALLOWEEN BINGO Bingo nights are brilliant fun for all and can easily be adapted for certain times of year. Dress up, drink blood red punch and work your voodoo to win the top prize.

ZOMBIE PUB CRAWL True, some town centres seem to host a zombie pub crawl every weekend, but this one is strictly for Halloween.

Gather your mates, dress like the undead, visit all your favourite pubs (the older and spookier the better), and forgo eating brains for quaffing delicious IPAs and ales. Terrifyingly good fun.



**YOUR FAMILY RUN
LOCAL
ELECTRICAL CONTRACTOR**

**SERVING COVENTRY
& WARWICKSHIRE
FOR OVER 30 YEARS**



EAGLE ELECTRICS LTD



From changing a lamp to re-wiring your factory. We can help!
FOR MORE INFORMATION OR A FREE QUOTATION, CONTACT DAVE ON:

T: **02476 464 138** M: **07730 309 332**

Email: **info@eagleelectrics.com**

Or find us online: **www.eagleelectrics.com**



Have you been inspired by Race Across the World?

CONTACT ME

- 07920440827
- helen.moore.travel@outlook.com
- helencatherinemore.inteletravel.uk

Discover China, Japan, India Southeast and Central Asia on fully inclusive tours including flights, accommodation, meals, transfers, expert guiding, entrance to tour destinations, visa fees and service.

WHAT I OFFER

Free service and support for ALL travel enquiries, saving you time and stress.
Travel plans tailored to your exact needs.
Access to exclusive offers and deals.

Helen Moore Travel is affiliated with IntelTravel whom hold ABTA - P7384.
IntelTravel are appointed agents with our suppliers that hold ATOL.



KARL STUART
INTERIORS

ELEVATE YOUR BATHROOM SPACE

Concept to completion

DESIGN

PROFESSIONAL INSTALLATION

CUSTOM FURNITURE

WATER PRESSURE & STORAGE SOLUTIONS

WWW.KSINTERIORS.UK | INFO@KSINTERIORS.UK

01676 292 500 | 07988 773 899



CONSERVATORY ROOF SOLUTIONS

**TRANSFORM YOUR EXISTING
CONSERVATORY INTO A LIVING SPACE
YOU CAN USE ALL YEAR ROUND**



CONSERVATORY ROOF REPLACEMENT

Every Ensign conservatory roof is bespoke. Accurately surveyed & precision built in our own factory.

- Large range of lightweight tile colours
- U-value up to 0.12, this is better than current building regulations
- Keylite roof windows
- Electrics & plaster finish

CONSERVATORY & ORANGERY EXTENSIONS

- Cost effective extensions
- Large range of designs
- LABC approval undertaken
- Average build time 4 weeks

REPLACEMENT WINDOWS & DOORS USING REHAU TOTAL 70 WINDOW & DOOR SYSTEMS

- Aluminium bi-fold doors
- Composite doors
- Rehau Total 70 Window & Door Systems
- Planitherm Technology sealed units for maximum efficiency
- High security PAS 24 locking systems



CALL TODAY TO BOOK YOUR **FREE**
NO OBLIGATION SITE SURVEY

01527 69296

www.ensignroof.co.uk

Scan to read our reviews





Resin Drives



Tarmac Drives



Luxury Patios



Steps



Astro Turf



Block Drives & Paving

- ✓ BLOCK DRIVEWAYS & PAVING
- ✓ RESIN DRIVEWAYS
- ✓ TARMAC DRIVEWAYS
- ✓ LUXURY OUTDOOR PATIOS
- ✓ STEPS TO FRONT DOORS
- ✓ DECORATIVE WALLING
- ✓ LANDSCAPING
- ✓ ASTROTURF
- ✓ FENCING

For a FREE, NO OBLIGATION quotation call:

T: 01926 674 782 M: 07961 358 367

projectspaving@icloud.com

www.projectspaving.co.uk

328 Alcester Road, Wythall, Birmingham B47 6JR

Get more LOCAL CUSTOMERS



Advertise your business in over 26,000 magazines printed & distributed every two months.

Prices start from just £26+VAT per month

Call **01926 8000 84** | **075 111 222 45**
or email: **info@stonestrowpublications.co.uk**

USEFUL LOCAL

TELEPHONE NUMBERS

MEDICAL

NHS Advice Line & Out of Hours Dental Advice
111

Warwick Hospital	01926 495 321
Coventry University Hospital	02476 964 000
Solihull Hospital	0121 424 2000
Balsall Common Health Centre	01676 935 000

POLICE & FIRE

West Midlands Police	0845 113 5000 or 101
Warwickshire Fire & Rescue	01675 62 007
Bickenhill Community Fire Station	0121 380 7527
Solihull Fire Station	0121 380 7521

HELPLINES & HOTLINES

Samaritans	116123
Consumer Advice	03454 04 05 06
Citizens Advice Bureau	01926 457 900
RSPCA	024 7671 3717

UTILITIES

Electricity Power Loss	0800 3281111
Severn Trent Water	0800 783 4444
Transco Gas Leak	0800 111 999
BT Fault Line	0800 800151
National Rail Enquiries:	03457 48 49 50

TRAVEL

Chiltern Railways	08456 005165
National Rail Enquiries	08457 484950
West Midlands Trains	0333 311 0039
Bus Travel Line	0871 2002233
Coventry Airport	02476 301717
Birmingham Airport BHX	0871 222 0072

WE BUILD

WEBSITES



- Website design
- Up to 5 pages
- SEO integration
- Domain & Hosting
- Logo, banner design
- FREE INITIAL CONSULTATION

075 111 222 45 | 01926 8000 84
www.stonethrowpublications.co.uk
info@stonethrowpublications.co.uk

TRAVEL BLOG

KYOTO



If you're looking for an alternative holiday destination, this super slice of Japan might be just the ticket.

When imagining a trip to Japan, your first thought might be of neon lights, futuristic cityscapes and a Lost in Translation adventure in the country's bustling capital city, Tokyo. But much of this magnificent country is far more rural, picturesque and steeped in history and culture.

Once the imperial capital of Japan, Kyoto's allure lies in its deep historical roots. This serene and wonderful destinations has over 1,600 Buddhist temples and 400 Shinto shrines. Each is a masterpiece, showcasing the astonishing artistry of generations past.

Kinkaku-ji, the famed Golden Pavilion, shimmers above a reflective pond, its gold leaf exterior glowing in the afternoon sun as if a mirage. Ginkaku-ji, or the Silver Pavilion may be less ostentatious, but with its exquisite sand gardens and moss-covered grounds it certainly holds its own.

Though Kyoto cannot emulate the neon fever dream of Tokyo, in the atmospheric districts of Gion and Higashiyama, tradition comes alive. Wooden machiya townhouses, stone lanterns and willow-lined canals set the stage for encounters with Kyoto's living icons - the maiko and geiko (apprentice and full-fledged geisha).

In the early evening, the glow of lanterns reveals figures in exquisite silk, moving between teahouses, their footsteps echoing on ancient cobblestones.

For a second, you might think you are in an

immersive theme park, but these districts are not staged attractions, and are far more stunning for that fact.

No matter the season, Kyoto captivates with its natural beauty. In spring, clouds of cherry blossoms (sakura) transform parks and temples into surreal scenes.

Maruyama Park, the Philosopher's Path, and the grounds of Heian Shrine are especially breathtaking under a cascade of pale pink petals.

Summer brings lush greenery and the lively Gion Matsuri festival, while autumn cloaks the city in crimson and gold, particularly in the gardens of Tofuku-ji Temple and Arashiyama's mountainsides.

Once you've explored, it's time to sample the exquisite cuisine. At the heart of the city's food culture is kaiseki, a multi-course meal that elevates dining to an art form. You can of course keep it simple, by enjoying delicate wagashi sweets with matcha in a centuries-old teahouse. And don't miss Nishiki Market, known as "Kyoto's Kitchen," where you can sample everything from pickled vegetables to fresh sashimi and artisanal sweets.

Finally, visit workshops where artisans handcraft Kyo-yaki ceramics, shimmering Nishijin textiles, and intricate washi paper. The city's museums, like the Kyoto National Museum and the Kyoto International Manga Museum, offer deeper dives into the nation's creative heritage. Perhaps attend a traditional tea ceremony, watch a Noh or Kabuki performance, or join a hands-on class in calligraphy or ikebana (flower arranging).

When you leave, you'll be turning Japanese.

WHAT'S ON LOCALLY

Balsall Common Country Market

Date: every Saturday / Time: 10am - 12pm /
Venue: The Jubilee, 225 Station Road, Balsall
Common CV7 7FE

We are more than just a place to shop – we are a place where people meet and belong.

Come and have a cup of tea or coffee with us along with home-made cakes and goodies. Our range of foods includes cakes to die for, savoury meals you can pop in the freezer for later in the week and jams and marmalades in a class of their own. We have splendid flower arrangements, plants for your garden that include both the unusual and old favourites. Our fruits and vegetables are home grown and wholesome.

Coffee Together

Date: first Saturday of every month / Time: 10.30am - 12noon; Venue: The Jubilee Centre, 225 Station Rd, Balsall Common CV7 7FE
Organised by Churches together in Balsall Common and Berkswell. Entry fee is £2. this includes coffee and pre-wrapped biscuit. All profits go to charity. Enquiries to Clare Laland at clmap18@gmail.com

Balsall Common Memories Cafe

Date: 2nd Wednesday of every month / Time: 1.15pm – 3.00pm / Venue: Balsall Common Village Hall, Station Road CV7 7FF
We meet for social chat, laughter, entertainment, activities, raffle all accompanied by refreshments. Coffee & Chat 1st Thursday of the month 11 - 12.30pm at Balsall Common Library. For those with Dementia and their carers, all are welcome. Further information 07974 140353.

Card Club

Date: every 2 weeks on Mondays / Time: 2.15 - 4pm / Venue: Balsall Common Library
Refreshments are provided for a small charge. For more information please ask at help desk, call us on 01676 532 590 or visit www.solihull.gov.uk/library-events

Land Rover Sports and Social Club

Date: First Tuesday of every month / Time: 12pm – 3.00pm / Venue: Land Rover Sports & Social Club, 6 Billsmore Green B92 9LN
Join Age UK Solihull staff and volunteers for this monthly lunch club with a hot meal, weekly raffle and occasional singer. £10 to attend (includes meal).

Free Digital Training for older Solihull residents Various times.

Age UK Solihull are offering free digital training

for older Solihull residents who would like to improve their digital skills. Group courses and one-to-one support is available, for both beginners and those who already have basic digital skills. The training can help with online shopping, video calling, searching for information, accessing online learning, downloading and using apps, and more. For more information, contact Ashlee on 07397 718 455 or visit www.ageuk.org.uk/solihull/digital-champions

Berkswell and Balsall Common Sports & Community Association

Date: varied / Time: varied / Venue: The Lant, Meeting House Lane, Balsall Common
With cricket, hockey, running, sailing and tennis clubs plus a clubhouse and bar. Facilities also available for private hire. See www.bbcsca.co.uk or Facebook - BBCSCA / Berkswell Sports Bar

Firebird Singers

Date: every Friday / Time: 7pm - 9pm / Venue: Meriden Village Hall, Main Road, Meriden
A small and friendly choir, singing for pleasure whilst raising money for charity. Anyone 16+ that enjoys singing is welcome to join the choir. Come along, learn new songs, participate in our local concerts, make new friends. If you are interested in joining please contact Val on 01676522963 or Anna on 07792525999.

Balsall Common Methodist Church Toddlers Group

Date: every Tuesday / Time: 10am - 11.30am / Venue: Church Hall, Station Road
Term time only, £3 per adult, refreshments included. Open to all carers of pre-school children. All will be made very welcome. For further details contact Joy on 01676 532006.

Balsall Common Bat and Chat

Date: 2nd, 3rd and 4th Friday of the month / Venue: The Jubilee Centre.
Jacqui Clark has started a non-profit making Table Tennis Club. Come along and play Table Tennis. All abilities and ages very welcome. £5 per session which includes a cuppa and biscuits.

Warm Welcome Café

The Warm Welcome Cafe takes place weekly on Mondays: 9.30am-11.30 am at Balsall Common Methodist Church, Station Road; Thursdays: 2pm-4pm at St Peter's Church, Balsall Street East; Fridays: 2pm-4pm at Balsall Common Methodist Church, Station Road.

The Cafe does run during school holidays. Please also see Solihull Council web-site: www.solihull.gov.uk/here2help/warm-welcome-hubs.

Balsall Common u3a All-Members Meetings

Date: first Thursday of the month; Time: 2 pm / Venue: St Peter's Church Hall, Holly Lane, Balsall Common
We are vibrant group and are open and welcome

to everyone semi-retired or retired – sometimes described as a youth club for mature people! We have over 390 members and 40 interest groups ranging from table tennis to social and political history and everything in between! With light refreshments and a Guest Speaker - visitors welcome! balsallcommonu3a.org or call Matthew on 07419 770164 or email Chairman@balsallcommonu3a.org or membership@balsallcommonu3a.org

Trivia Night

Date: every Thursday / Time: 8pm / Venue: Ye Olde Saracens Head, Balsall Common
Hosted by Liam Sawyer, all proceeds go to Balsall Common primary school. £3 entry.

Heart of England WI

Date: 2nd Thursday of the month / Time: 7.30pm / Venue: Balsall Common Village Hall, 112 Station Road CV7 7FF

Heart of England Women's Institute is a thriving group, with lively members enjoying rambles, meals out, coffee mornings and craft evenings.
9th October: "Remembrance Day in other countries" by Christine Gregory; 13th November: La Boutique Florist. New members welcome.

Stories and Painting

Date: every Monday / Time: 2.15pm - 2.45pm / Venue: Meriden Library
A favourite story and painting fun for under 5s and their grown-ups.

Hobs Meadow Lunch Club

Date: Every Thursday EXCEPT the first Thursday of each month / Time: 12pm - 3pm / Venue: Hobs Meadow Pub, Ulleries Road B92 8ED
Come along to this lunch club for a hot meal, entertainment and wonderful company. £10 to attend (includes 2 course lunch, hot drinks and activities)

Welcome Wednesdays

Date: First Wednesday of every month / Time: 2pm - 3.30pm / Venue: Eastcote Park Care Home, Knowle Road, Barston B91 0JA
Enjoy hot drinks, cake, activities and a chat with others. Suggested donation to attend - £3.

Charity Quiz

Date: 9th October / Time: 7pm / Venue: Eastcote Park, Knowle Road, Eastcote B92 0JA
We will be raising funds for Knowle Donkey Sanctuary. Entry is £10 per team and maximum of 6 in a team. Please contact Nicola on 0121 269 1236 to book your team in.

Gentlemen's Club

Date: 16th October, 13th November / Time: 2.30 - 4pm / Venue: Eastcote Park, Knowle Road, Eastcote B92 0JA
October: a talk about the life of Charlie Chaplin
and November: a talk about The First Photographs & Film

Balsall Common Lions Autumn Foodbank - Door-to-door Foodbank Collection

Date: 18th October / Time: 11am
Balsall Common Lions will be collecting essential supplies with a door-to-door collection. Leave your donations on your doorstep or at one of our many Drop-off points around Balsall Common. Alternatively, if you miss us, you can donate here: www.cafdonate.cafonline.org/28383

Balsall Common Charity Quiz Night at The White Horse

Date: 19th October, 7th December / Time: 7.30pm / Venue: The White Horse, Kenilworth Road, Balsall Common, CV7 7DT
A regular charity fundraiser with all funds going to local good causes. A very popular topical quiz, with some extra entertainment and great prizes!
Contact Lion Mark Whitfield (lionmarkwhitfield@gmail.com) or 07795 184745

Balsall Common Lions Fireworks Extravaganza

Date: 8th November / Time: 5.30pm / Venue: Berkswell & Balsall Sports Association (Cricket & Tennis Club) Meeting House Lane CV7 7GE
We will have fire jugglers and displays, and a wide range of food and drink available from a variety of vendors. Tickets - available from: Michaels Drinks World, Oakes Farm Shop, A1 Motorist Shop, 0845 833 8565, Online via our website: www.balsallcommonlions.org
There will not be any parking available at the venue, so please walk to the event if convenient. If you are coming from further afield, parking is available at Heart of England School – just across the road.

Balsall Common Lions Live Music with Prime Numbers

Date: 29th November / Time: 7.30pm / Venue: Heart of England School, Gipsy Lane, Balsall Common, CV7 7FW
All proceeds will go towards good causes. PRIME NUMBERS are a Rock and Pop covers band, playing music from the 1950s, 60s and 70s. Tickets £20:00 (including light supper). Go to our website for more details. www.balsallcommonlions.org

Sew at the Jubilee

Date: First Friday in the month / Time: 10am - 4pm / Venue: The Jubilee, Balsall Common
Bring your own project and equipment and enjoy the company and experience of fellow stitchers. Irons and drinks provided. For further information contact Joy Fine 07773994847

While we do our best to ensure the accuracy of our listings, events may be postponed or cancelled without notice. Please confirm with the organiser before making any plans for attending events. For your news, events and group meetings to be featured free of charge on our What's On Page please email [Ksenia: info@stonesthrowpublications.co.uk](mailto:Ksenia@stonesthrowpublications.co.uk)

HOROSCOPES

OCTOBER 2025

ARIES

(MARCH 21 - APRIL 20)

The Libra Sun and communicative Mercury both occupy a pivotal sector of your chart, suggesting that some exciting developments appear to be up for grabs during the first half of this month. The powerful Libra new moon on the 21st challenges you to up your game and reach out to take some risks, but be sure to weight up both sides of any disagreement before making a final decision.

TAURUS

(APRIL 21 - MAY 21)

Your financial situation, earning potential and your values are all your top priorities this month as dynamic Mars in Scorpio challenges you to review these areas of your life. The Sun and Mercury, both in balanced Libra, suggest the possibility of some kind of future joint venture. Venus, your ruling planet, moves from Virgo to Libra on the 14th, indicating that some practical decisions may have to be made before then.

GEMINI

(MAY 22 - JUNE 21)

Love and romance are in the spotlight during October as the Sun and communicative Mercury stir up any issues concerning your relationships. Mercury, your ruler, joins Mars in Scorpio on the 7th, finding balance is a key issue this month and some deep soul searching may well be needed. It may be best to think carefully and weigh all your options before you express your opinion.

CANCER

(JUNE 22 - JULY 22)

Home and family are your top priorities this month, particularly after the 14th as Venus joins the Sun in Libra, the sign of the scales. Jupiter is positive in your sign and the powerful Libra new moon on the 21st highlights a brilliant new beginning and gives you the opportunity to speak your mind as your thinking becomes much clearer and you prepare to forge ahead with an important decision.

LEO

(JULY 23 - AUGUST 23)

With the assistance of the radiant Sun and quick thinking Mercury, both in the sign of the scales, October is looking very positive for all levels of communication and negotiations. Your mind should be open but focussed in order to expand your knowledge. Action planet Mars in Scorpio is stirring up the domestic area of your chart, you may need to attend to some emotional intensity concerning important family matters this month.

VIRGO

(AUGUST 24 - SEPTEMBER 22)

Exciting new beginnings are evident as the month commences, the Libra Sun shines brightly on your financial situation and with the assistance of business minded Mercury some pre-planned changes can now be given the go ahead. A positive Libra new moon on the 21st brings your attention to what is really important and helps you to ignore or dismiss what is no longer valid in your life.

LIBRA

(SEPTEMBER 23 - OCTOBER 23)

This month's planetary activity turns your attention to your love life. Relationships and romance are highlighted, particularly after Venus, your ruling planet, arrives in your sign on the 14th. Your powers of communication should be at a highpoint, assisting with any important decisions that need to be made. Your new moon on the 21st gives you a strong boost to achieving your goals.

SCORPIO

(OCTOBER 24 - NOVEMBER 22)

The Libran Sun and communicative Mercury start the month in the most introspective part of your chart, indicating that you need to take care of your physical health as your vitality may not be at its best. Power planet Pluto, your ruler, turns direct on the 14th and offers you the chance to reconnect with your determination and courage and clear the path for innovative new projects.

SAGITTARIUS

(NOVEMBER 23 - DECEMBER 21)

Venus shines brightly at the highest point of your chart until the 14th, be sure to use this time wisely for connecting with new directions and challenges within your career. Abundant Jupiter, your ruler, offers opportunities in your financial area. It is vital that you steer your energy towards realistic targets that can be completed with hard work and determination.

CAPRICORN

(DECEMBER 22 - JANUARY 20)

Jupiter is strong in your opposite sign this month, indicating that love and romance are both important themes. There is also a challenge to your work and career situation as the radiant Libra Sun and business minded Mercury both illuminate the highpoint of your chart. Try not to give in to unnecessary self-criticism, as your task this month is to balance logic with imagination. Opportunities arrive after the Libra new moon on the 21st.

AQUARIUS

(JANUARY 21 - FEBRUARY 18)

Planetary patterns are urging you to take up a new form of study that can eventually lead to enhanced wisdom and spiritual growth. Venus arrives in Libra on the 14th, indicating that a balanced view is now required to push you forward and achieve your dreams. The powerful full moon in fiery Aries on the 7th brings with it a new dynamic, stirring up your appetite for new beginnings.

PISCES

(FEBRUARY 19 - MARCH 20)

An exciting creative opportunity appears to be up for grabs during October as the full moon in Aries on the 7th is activated by abundant Jupiter in Cancer. This powerful energy challenges you to up your game and reach out to take some risks. Action planet Mars remains in powerful Scorpio all month, indicating that some exciting travel plans are coming your way.

Christine Chalklin, Inspirational Astrologer and Life Coach.

Take a refreshing new look at the year ahead by booking an astrological reading now. Consultations are available on Skype, Zoom, WhatsApp or telephone. Mobile: 07813 483549 | www.restyleyourlife.co.uk | christine_chalklin@hotmail.com



KIDS PAGE



FIND SEVEN DIFFERENCES BETWEEN THESE TWO PICTURES



Why didn't the skeleton go to the Halloween party?

Because he had no 'body' to go with.

What do ghosts wear when their eyesight is bad?

Spooktacles.

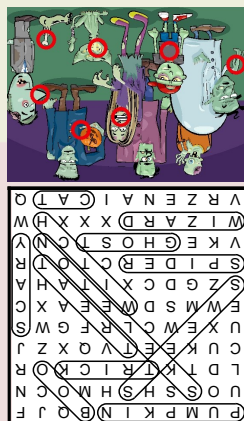


FIND ALL THE SPOOKY WORDS HIDDEN IN THE GRID

P	U	M	P	K	I	N	B	Q	J	F
U	O	S	S	H	S	H	M	O	C	N
L	D	T	K	T	R	I	C	K	O	R
C	U	K	E	E	T	V	Q	X	Z	J
U	X	E	W	C	L	R	F	G	W	S
E	W	M	S	D	W	E	E	A	X	C
S	Z	G	D	C	X	I	T	A	H	A
S	P	I	D	E	R	C	T	O	T	R
V	K	E	G	H	O	S	T	C	N	Y
W	I	Z	A	R	D	X	X	X	H	W
V	R	Z	E	N	A	I	C	A	T	Q

BOO
CAT
GHOST
PUMPKIN
SCARY
SKELETON
SPIDER
SWEETS
TREAT
TRICK
WITCH
WIZARD

SOLUTIONS:



RESTAURANTS & TAKEAWAYS

BALSALL COMMON, BERKSWELL

Sumatra *Indian*

351 Kenilworth Rd, Balsall Common CV7 7DL
02475 920 797

Masala Club *Indian*

235-239 Station Rd, Balsall Common CV7 7EG
01676 533 210

The Brickmakers Arms *Gastropub*

307 Station Road, Berkswell CV7 7EG
01676 533 890

The White Horse *British, European*

Kenilworth Rd, Balsall Common CV7 7DT
01676 533 207

The George in the Tree *Gastropub*

Kenilworth Rd CV7 7EX
01676 533 118

Cafe Tamarinds *Pan-Asian*

376 Kenilworth Rd CV7 7ER
01676 533 308

Balsall Common Fish Bar *Fish & Chips*

207 Station Rd, Balsall Common CV7 7FE
01676 533 576

La Delicia *British, European*

231 Station Rd, Balsall Common CV7 7EG
01676 532 177

Oriental Express *Chinese Takeaway*

176 Station Rd, Balsall Common CV7 7FD
01676 535 900

Costa Coffee *Café*

unit 2 Station Rd, Balsall Common CV7 7FE
01676 529 277

McKees Brasserie *British, European*

273 Kenilworth Road, Balsall Common CV7 7EL
01676 533 004

Oakes farm Shop & Café *Café*

Balsall Street, Balsall Common CV7 7AQ
01676 535 537

Ye Olde Saracens Head *Gastropub*

Balsall Street, Balsall Common CV7 7AS
01676 533 862

Domino's Pizza *Takeaway Pizza*

209 Station Road, Balsall Common, CV7 7FE
01676 530 099

The Railway *Gastropub*

547 Station Rd, Balsall Common CV7 7EF
01676 533 284

The Oak Room at Nailcote

Hall Hotel *British, European*
Nailcote Lane, Berkswell
02476 466 174

Bear Inn *Gastropub*

Spencers Lane, Berkswell CV7 7BB
01676 925 562

Bewitched Coffee *Café*

345 Kenilworth Rd, Balsall Common CV7 7DL

Store & Stove *Café*

10 Church Lane, Berkswell CV7 7BJ
01676 248384

Monica's Bakes *Café*

231 Station Road CV7 7EG
07984 990241

MERIDEN

The Barn at Berryfields Farm *Cafe*

The Berryfields Farm Shop, Berkswell Road,
Meriden CV7 7LB
01676 522 155

Marco Pierre White *European*

The Manor Hotel at Meriden, Main Road,
Meriden CV7 7NH
01676 522 735

Strawberry Bank Hotel & Restaurant *British*

Main Rd, Meriden CV7 7NF
01676 522 117

The Bulls Head *Gastropub*

Main Rd, Meriden CV7 7NN
01676 523 798

Toby Carvery *British*

Stonebridge Island, Coventry Rd, Meriden CV7 7HL
01675 442 326

HAMPTON IN ARDEN

The Lake at Barston *Global Grill*

Marsh House Farm Ln, Barston B92 0LB
01675 444 890

The White Lion Inn *Gastropub*

High Street, Hampton-in-Arden B92 0AA
01675 442 833

Soho Tavern *Gastropub*

Hampton-in-Arden B92 0AH
01675 442 277

Peel's Restaurant, *British, European*

Hampton Manor, Shadow Brook Lane, B92 0EN
01675 446 080

Please send
any updates to
**stpdirectories@
hotmail.com**

Misty Double Glazing?

Hi My name is Dave Millidge, let me introduce my company where I repair windows and replace misted up Double glazed units.

The area that I cover is Coventry and Warwickshire. You may have seen me around in your street or even have family and friends who I have worked for in the past ten years, with over 6,000 satisfied customers during that period. I started Misty to Clear to give customers the best value repairs in the current climate.

The Misty to Clear website allows total transparency of the customer experience. You can log into the website and view work that I have carried out. You can also leave feedback on social media. Therefore I give a 5 year guarantee on all new double glazed units fitted by Misty to Clear.

This is a genuine guarantee which does not come as an extra to my price.

I started Misty to Clear mindful that the cost of repairs is probably key to most people's budget when using tradesmen to do work on their behalf in their homes.

I offer a lower cost service to both old and new customers as I operate directly for the customer with no additional hidden charges or insurance costs to you the customer.

So my Company name is Misty to Clear where I can offer steamed up window glass replacement and fix broken handles, hinges, seals, window locks and door locks.

I also change glass in Velux windows too.

Satisfaction guaranteed to be a high standard that carries a 5 year manufacturer backed guarantee.



Clearly a great service!

**Don't replace
the Frames
...just the
Panels!**

Misted/Failed Double Glazed
Units Replaced
Broken or Damaged Windows?
Faulty Hinges, Handles or Locks?
Want the latest energy
saving glass?
5 year guarantee
on new double glazing

MISTY to CLEAR Window
Repair Service

**OVER 25 YEARS
EXPERIENCE**

**SATISFACTION
GUARANTEED**

Call Dave Millidge

07704613430

web:

www.mtcwindows.co.uk

email:

dave@mtcwindows.co.uk

**Misty To Clear
Warwick Limited**

Capella

ACADEMY OF DANCE

We offer dance classes in Berkswell for all ages: from children of walking age all the way to adults. First lesson is free, so give me a call to book your place.



Ballet

Jazz

Acro
Gymnastics

Musical Theatre



TAP

Call Kayleigh

07985 673259

www.capellaacademy.co.uk

kayleigh@capellaacademy.co.uk

MICHAEL

GRAHAM

Painter & Decorator

Interior & Exterior
Plastering
Carpentry
General Handyman

02476 387956

07973 416451

mickfxgraham@gmail.com

michaelgrahamdecoratorsltd.co.uk



Checkatrade.com
Where reputation matters



MATHS TUTOR

Angelo Berté BA (Hons) PGCE

Offered by an experienced and qualified tutor.

Teach Maths from Key Stage 2
up to & including A-Level. DBS Checked.

Structured learning

Preparation for Entrance Exams

Thorough knowledge of Exam Boards

100% Pass Rates

Mathematics for Adults:
making a career change or returning
to education

For an informal discussion please contact

Angelo Berté BA (Hons) PGCE

01926 490579 | 07731 640281

angeloberte@hotmail.co.uk

angelobertemathstuition.com

Guitar Tuition

with Angelo Berté BA (Hons) PGCE

Experienced and qualified tutor for all levels & styles.

Theory, Practical and Ear Training

Exams in Classical, Bass & Electric Guitar

Evening, Weekend or Daytime Lessons

All abilities, ages and music
styles catered for.

Learn in comfort in your own home

Electric

Acoustic

Classical



01926 490 579 ~ 07731 640 281

angeloberte@hotmail.co.uk

www.angeloberte.co.uk

Member of the Registry of Guitar Tutors Enhanced DBS checked

CLASSIFIEDS



OAKLEY GRANGE
CINNAMON LUXURY CARE

Oakley Grange Care Home
Call Us on:
01926 953 148

ADVERTISE HERE

£22 + VAT
per month

01926 8000 84 | 075 111 222 45
info@stonestrowpublications.co.uk



CALEANING DRIVEWAYS
PATIOS ~ ROOFS ~ GUTTERS
FASCIAS & SOFFITS

07546 264164
enquiries@solclean.co.uk
www.solclean.co.uk




DRIVEWAYS & LANDSCAPE SOLUTIONS

0121 652 0154 | 01926 674 782
07961 358 367
projectspaving@icloud.com
www.projectspaving.co.uk

Cabinmaster



01926 757975
info@cabinmaster.co.uk

HOMEWOOD
Leamington Spa
Residential Care Home



01926 423 519
www.mha.org.uk/homewood



Get in touch today:
01527 69296

**Let us help you transform
your Conservatory**

www.ensignroof.co.uk
enquiries@ensignroof.co.uk

EAGLE ELECTRICS LTD




02476 464 138
07730 309 332
info@eagleelectrics.com
www.electricalcoventry.org.uk





TAMARIND
EAT. DRINK. RELAX

BOOKINGS NOW BEING TAKEN FOR
CHRISTMAS PARTIES

"Perfect place to celebrate the festive season".
(Party menu available)

CHRISTMAS DAY LUNCH

£50 per adult | £30 per child (Under 10's)
(£10 per head deposit required)

Tel: 01676 533 308 | www.cafetamarinds.co.uk
376 Kenilworth Road, Balsall Common
Coventry, CV7 7ER



ADEPT ACCOUNTING

JENNIE BUCKWORTH CTA IFA

A FRIENDLY SERVICE FOR SMALL AND
MEDIUM SIZED BUSINESSES

TAX ADVICE, ANNUAL AND MANAGEMENT
ACCOUNTS, BOOKKEEPING, VAT RETURNS,
AND SELF-ASSESSMENT TAX RETURNS.

01926 419348 OR 07816 233874

adept.accounting@yahoo.com
www.adept-accounting@yahoo.co.uk



C. Stevens Roofing

*The regions
Premier Roofing Company*

A family business with over
50 years experience

- New Roofs
- Flat Roofs
- Leadwork
- Chimneys
- Re-Pointing
- Small Repairs
- UPVC Facias
- Guttering

01676 535290

www.cstevensroofing.co.uk



EASTCOTE
PARK
CINNAMON LUXURY CARE

TALK TO US
ABOUT OUR
RENTAL
OPTIONS

EASTCOTE PARK LUXURY RETIREMENT LIVING

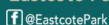
Eastcote Park offers a vibrant community with the reassurance, safety and companionship you need to live an active and fulfilling life. Close to the village of Knowle but within easy reach of Solihull, this exquisite community offers a range of services and facilities to enhance your lifestyle.



Eastcote Park is part of Cinnamon Care Collection and offers Independent/ Assisted Living apartments and a care home situated in 5 acres of beautifully landscaped grounds. It has been designed to provide a unique community where people will always come first. Our apartment prices start from £385,000.

To find out how we can make your move to Eastcote Park easy please call our team on 0121 756 7158 or email eastcote.enquiries@cinnamoncc.com

Eastcote Park Village & Care Home Knowle Road, Eastcote, Solihull B92 0JA



@EastcotePark

www.cinnamoncc.com/eastcote

*Terms and conditions apply

Pension
TRANSFER
Gold Standard

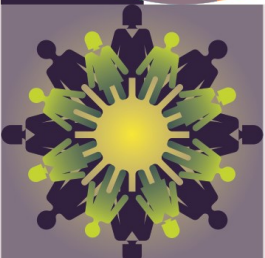


JAMIESON CHRISTIE CHARTERED FINANCIAL PLANNERS

TIME FOR A CHANGE?

Talk to us about a review of your previously transferred pension benefits plus

- Retirement planning and pension consolidation
- Tax efficient investing including business sales and inheritance
- Socially responsible investing for growth and/or income
- Inheritance tax and estate planning



Contact us to learn how we can help.

Head Office:

Regent House, 430-432 Kenilworth Road,
Balsall Common CV7 7DN

Telephone 01676 532210 / 03300 505040
mail@jamiesonchristie.com / www.jamiesonchristie.com

Serving our clients nationwide with offices in
London, East Midlands and Staffordshire.

Authorised and regulated by the Financial Conduct Authority.

***Tailored financial planning.
For now, for the future.***



Google
Customer Reviews
★★★★★