

# STONETHROW DIRECTORY

AUGUST / SEPTEMBER 2025

## KENILWORTH

Hand delivered free to 8,000 homes & businesses every 2 months

ELEVATE YOUR  
**BATHROOM SPACE**

**01676 292 500 | 07988 773 899**  
**WWW.KSINTERIORS.UK | INFO@KSINTERIORS.UK**

**KARL STUART**  
INTERIORS

MORE ON PAGE 16

Local Businesses | Local News & Events | Local Stories

**JAMIESON CHRISTIE**  
WEALTH MANAGEMENT



**SEE  
BACK PAGE  
FOR MORE  
DETAILS**

INVESTMENTS, PENSIONS, TAX PLANNING

ESTATE and IHT PLANNING, EDUCATIONAL FEES, EMPLOYEE BENEFITS

# Misty Double Glazing?

**Hi My name is Dave Millidge, let me introduce my company where I repair windows and replace misted up Double glazed units.**

The area that I cover is Coventry and Warwickshire. You may have seen me around in your street or even have family and friends who I have worked for in the past ten years, with over 6,000 satisfied customers during that period. I started Misty to Clear to give customers the best value repairs in the current climate.

The Misty to Clear website allows total transparency of the customer experience. You can log into the website and view work that I have carried out. You can also leave feedback on social media. Therefore I give a 5 year guarantee on all new double glazed units fitted by Misty to Clear.

This is a genuine guarantee which does not come as an extra to my price.

I started Misty to Clear mindful that the cost of repairs is probably key to most people's budget when using tradesmen to do work on their behalf in their homes.

I offer a lower cost service to both old and new customers as I operate directly for the customer with no additional hidden charges or insurance costs to you the customer.

So my Company name is Misty to Clear where I can offer steamed up window glass replacement and fix broken handles, hinges, seals, window locks and door locks.

I also change glass in Velux windows too.

**Satisfaction guaranteed to be a high standard that carries a 5 year manufacturer backed guarantee.**



## Clearly a great service!

**Don't replace  
the Frames  
...just the  
Panels!**

Misted/Failed Double Glazed  
Units Replaced  
Broken or Damaged Windows?  
Faulty Hinges, Handles or Locks?  
Want the latest energy  
saving glass?  
5 year guarantee  
on new double glazing

**MISTY to CLEAR** Window  
Repair Service

**OVER 25 YEARS  
EXPERIENCE**

**SATISFACTION  
GUARANTEED**

*Call Dave Millidge*

**07704613430**

web:

[www.mtcwindows.co.uk](http://www.mtcwindows.co.uk)

email:

[dave@mtcwindows.co.uk](mailto:dave@mtcwindows.co.uk)

**Misty To Clear  
Warwick Limited**

Aquarius Interiors

# Shutters & Curtains

KENILWORTH Showroom

**Tel: 01926 359096**

COVENTRY Showroom

**Tel: 024 7771 7517**

|||||  
Aquarius  
Interiors

**New**

Website just launched.



**[aquariusinteriors.co.uk](http://aquariusinteriors.co.uk)**



# A NOTE FROM THE EDITOR

Welcome to the August/September Edition.

The month of August is the holiday month: the weather is warm and usually dry, but the nights are lengthening a little, making the mornings fresh and the evenings cool and welcoming and perfect to dine alfresco with family and friends.

Here in England, September is the beginning of the academic year, with children starting or returning to school near the beginning of the month and students entering university towards the end.

In gardens across the country, those with green fingers are harvesting fruit and vegetables, taking cuttings and saving seeds. Lawns are greening up with the beginning of the autumn rains, and regular mowing is recommencing after the end of the heat of August.

After children return to school, many of us are enjoying the weather and start getting out and about again, visiting parks, countryside, stately homes and gardens, enjoying long walks, leisurely lunches and delicious afternoon teas. We return home as the evenings draw in, the fireside lovingly beckons, and autumn television favourites delight us once again.

If you would like to promote a business locally - we would love to help by bringing a wealth of knowledge and experience in connecting businesses with local communities, creating eye-catching adverts and making sure each door gets a copy of their directory full of local talent. Give us a call or email for a friendly chat. We are a small local business too, we only thrive if your business thrives, so we do our best to make sure you are seen and recognised by local residents who receive, read, retain and reference Stonesthrow Directories.

We have one more bank holiday left before the Summer ends: Monday 25th of August.

Please remember to mention Stonesthrow Directories when calling our Advertisers, so we can build on the portfolio of ultra local trades and services, news, events and clubs in one handy guide delivered straight to everyone's door.

However you decide to spend next couple of months - keep your heart and your business local.

Yours, Stonesthrow Publications.

01926 8000 84 / 075 111 222 45  
INFO@STONESTHROWPUBLICATIONS.CO.UK  
WWW.STONESTHROWPUBLICATIONS.CO.UK

**Stonesthrow**  
Publications

# CONTENTS IN THIS ISSUE



FIVE BIG HOLIDAY MISTAKES TO AVOID

18



24 USEFUL LOCAL  
TELEPHONE NUMBERS



MAKE YOUR BATHROOM  
ACCESSIBLE

8



22  
LOCAL RESTAURANTS  
& TAKEAWAYS



28  
HOROSCOPES



WHAT'S ON

26 - 27



THIS MAGAZINE IS FULLY RECYCLABLE. PLEASE KEEP  
UNTIL THE NEXT COPY ARRIVES IN 2 MONTHS TIME



STONESTHROW\_PUBLICATIONS



STONESTHROWPUBLICATIONS

We gratefully acknowledge the support of businesses and organisations, whose adverts or information appear in Stonesthrow Publications Ltd. Whilst every effort is taken to ensure the accuracy, we can not accept responsibility for loss, damage or omission caused by error in the printing of an advert or an article. Nor can we accept responsibility for claims made by advertisers/contributors, or services, provided by the advertisers. It is the responsibility of the advertiser to make sure, that the information they provide is correct and up to date at the time of the publication. No part of this directory can be reproduced, copied or stored without the prior written permission of the Stonesthrow Publications Ltd. The use of this magazine for direct marketing or canvassing is strictly prohibited. Distribution area and day may vary at the discretion of the publishers. All artwork, pictures and text are accepted on the basis, that permission for their use in the publication has been obtained by the advertiser or contributor. Stonesthrow Publications Ltd can not accept responsibility for alterations or changes of details after the publication date. **Stonesthrow Publications Ltd**



# LASTING POWERS OF ATTORNEY (LPAs)

## WHAT HAPPENS WHEN I CAN'T MAKE DECISIONS FOR MYSELF?

Many of us would like to plan for a time when we need help making decisions and looking after our affairs. A stroke, dementia, Alzheimer's, heart attack, or a severe accident can leave us dependent upon others to help make crucial choices in our lives. Or we may need to give someone decision-making power for us if, say, we're going to be in hospital or abroad for a time and can't easily carry out decisions for ourselves. To plan for the future you can create an LPA.

An LPA is a simple way for you to choose someone you trust to make decisions for you. LPAs can be a lot less expensive than other ways for people to make decisions on your behalf and can make things much easier for other people in your life than the alternatives.

## WHAT WOULD HAPPEN IF I DON'T CREATE A LASTING POWER OF ATTORNEY (LPA)?

- You will no longer be able to decide who makes decisions for you and looks after your affairs (you can only make your LPA while you still have mental capacity).
- People you don't know will end up making crucial decisions for you instead – such as where you live, whether to accept medical treatment to keep you alive, what you eat and wear, and about your property and your finances.
- Your spouse, children or friends will have to go to court to make decisions on your behalf – which will be a lot more expensive and time-consuming than making an LPA now.

If you still have mental capacity, LPAs are a simple and legally robust way of giving someone you trust the power to make decisions for you – temporarily or for a longer time.

*Westminster Law are specialists in organising this.*

Leading the way in providing an AFFORDABLE PROFESSIONAL service



## WESTMINSTER LAW

Wills~Estate Planning~Probate



**If you are over 60  
it will cost you just £95\*  
for us to prepare your Will.**

We are also Lasting Power of Attorney Specialists - only £110\* each LPA if instructed during the Will appointment.

***Our prices include free home visits\*, VAT\* and Inheritance Tax advice.***

Call us now for a no obligation chat  
on: **02475 100099**

**www.westminster-law.co.uk ~ Coventry office email: dr@westminster-law.co.uk**

Westminster Law Group Ltd ~ Registered Office: Wellesley House, 204 London Road, Waterlooville PO7 7AN

\*These very special rates are only available if you are over 60 years old. Minimum spend for a free home visit is £95.

Our normal price for a standard single Will is £150, or £250 for a couple. VAT, when applicable, is included in our prices.

Office of the Public Guardian (OPG) registration fee, when applicable, is not included in these prices.

Please quote Stonestrow Publications when calling advertisers



## ADEPT ACCOUNTING

JENNIE BUCKWORTH CTA IFA

A FRIENDLY SERVICE FOR SMALL AND  
MEDIUM SIZED BUSINESSES

TAX ADVICE, ANNUAL AND MANAGEMENT  
ACCOUNTS, BOOKKEEPING, VAT RETURNS,  
AND SELF-ASSESSMENT TAX RETURNS.

01926 419348 OR 07816 233874

adept.accounting@yahoo.com  
www.adept-accounting@yahoo.co.uk

## TRADES ADVERTISE HERE

from just **£26**

+VAT per month



01926 8000 84

075 111 222 45

info@stonestrowpublications.co.uk

## LEAFLETS PRINTED

from just **£140**

+VAT per 5,000 x A5  
double-sided, gloss leaflets



T: 01926 8000 84

M: 075 111 222 45

E: info@stonestrowpublications.co.uk

## LEAFLETS DELIVERED

for just **£40**

+VAT per 1,000



T: 01926 8000 84

M: 075 111 222 45

E: info@stonestrowpublications.co.uk



# Cabinmaster



SCAN ME



**Cabin Master Village, 251 Toton Lane, Stapleford, Nottingham NG9 7JA**  
**Studley Garden Centre, Henley Road, Studley, Warwickshire B80 7DR**

*Open 7 Days A Week • Free Site Survey • Free Design Service*

**0115 932 8888 | 01926 757975**



SCAN ME



Over 20 years in  
business



Manufactured in  
Derbyshire, UK



10 year manufacturer's  
guarantee

Please mention Stonestrow Publications when calling advertisers

# ACCESSIBILITY

## OF YOUR BATHROOM



Many people face mobility challenges so installing accessibility features in the bathroom can make life easier, more convenient and help individuals remain independent.

Over 8% of UK households or 1.9 million homes have at least one person who has mobility issues. Being able to use the bathroom unaided helps us to retain our independence and maintain personal dignity. There are a range of installations that can be made to improve bathroom accessibility, some simple and inexpensive that you can do yourself or with some professional help, others that might require professional redesign of your bathroom.

### **Safety first**

Falling is the most common injury you can sustain in your bathroom, and over a third of these injuries lead to a visit to A&E. These happen more to people who have mobility issues and can have serious health implications. But a lot of accidents can be prevented by making bathroom adaptations.

### **Simple ways to make your bathroom accessible**

It is a fact of life, for various reasons, that many of us struggle getting on and off the toilet. Installation of handrails will make this easier as will installing an inexpensive raised seat on the toilet seat.

Handrails around the bath or shower will also make getting in and out safer as will non-slip mats. Battery operated bath lifts can sit neatly in your bath and allow safe entry and exit of the bath. A shower seat is a simple but elegant solution to safer showering if standing is a

problem and it folds away after use.

High contrast taps will help people with sight problems remain safe and having a smart shower with voice activated commands installed will help someone keep their independence. Having non-slip flooring installed with non-slip bath rugs can significantly reduce the chances of falling in a bathroom.

### **Professional adaptations**

Many of us choose to consult a certified bathroom professional and seek their advice on how they can help us stay safe. Having a walk-in shower could make the process of taking a shower safe if you have mobility issues and they can look stylish and enhance the value of your house. Or why not consider a walk-in bath which has a door on the side which means you don't have to step over a bath side, just step in and enjoy a relaxing soak in the tub. Wet rooms are perhaps one of the biggest changes you might consider but they will also have one of the biggest impacts on the quality of your life if you have mobility issues. They look very stylish and come in a vast range of designs. Wet rooms don't have trip hazards and there are no shower doors or curtains to worry about. If you use a wheelchair or walking aids then a wet room could greatly improve your ability to use the bathroom independently and safely. A bathroom professional could also advise you on specialised toilets that have adjustable height settings offering enhanced mobility opportunities as they automatically elevate and lower as needed.





# Travel Moore

## with Helen Moore Travel



*Have you been inspired by Race Across the World?*

### CONTACT ME

- 07920440827
- helen.moore.travel@outlook.com
- helencatherinemoore.inteletravel.uk

Discover China, Japan, India Southeast and Central Asia on fully inclusive tours including flights, accommodation, meals, transfers, expert guiding, entrance to tour destinations, visa fees and service.

### WHAT I OFFER

Free service and support for ALL travel enquiries, saving you time and stress.  
Travel plans tailored to your exact needs.  
Access to exclusive offers and deals.

Helen Moore Travel is affiliated with IntelTravel whom hold ABTA - P7384. IntelTravel are appointed agents with our suppliers that hold ATOL.



## FROM SMALL PAINT JOBS

## TO LARGE HOME RESTORATIONS

I provide professional painting and decorating services to domestic and commercial customers. Exterior & Interior work undertaken.

For a FREE, NO OBLIGATION quote contact Sam Holt:

# 07856 762 879

**SJ\_HOLT@HOTMAIL.CO.UK**

**WWW.SJHOLTDECORATORS.CO.UK**



## C. Stevens Roofing

*The regions  
Premier Roofing Company*

A family business with over 50 years experience

- New Roofs
- Flat Roofs
- Leadwork
- Chimneys
- Re-Pointing
- Small Repairs
- UPVC Facias
- Guttering

# 01926 485525

**www.cstevensroofing.co.uk**



**OAKLEY  
GRANGE**  
CINNAMON LUXURY CARE

WE LOOK  
FORWARD TO  
WELCOMING  
YOU!

## TAKE A BREAK WITH CONFIDENCE AT OAKLEY GRANGE CARE HOME

Whether you're planning a holiday, recovering after a hospital stay, or simply in need of some well-deserved rest, Oakley Grange Care Home offers exceptional respite care or short stays designed around you.

At Oakley Grange, every guest is welcomed as part of our community, with access to wonderful facilities and a warm, caring atmosphere.



For more information or to arrange a stay please call us **01926 953 894**  
or email [oakley.haa2@cinnamoncc.com](mailto:oakley.haa2@cinnamoncc.com) or scan the QR code.

RESIDENTIAL CARE | DEMENTIA CARE | RESPITE CARE

Oakley Grange Care Home, Cox Gardens, Warwick CV34 7AT  
[www.cinnamoncc.com/oakleygrange](http://www.cinnamoncc.com/oakleygrange) Our What3Words location: **Ranked.Moved.Bath**



# Window & Door Repairs & New Installations



- Misted/Steamed Up Windows
- Broken Glazing
- Broken Hinges, Handles & Locks
- Poorly Fitting Windows & Doors
- Locks Fixed



Great Service  
& Quality  
Workmanship  
Guaranteed



## New Windows & Doors

- UPVC
- Aluminium
- Timber
- Composite



Call Paul At Homeseal Today For Your  
**FREE No Obligation Quotation**  
Tel: 024 7646 6260 Mob: 07976 710463  
[www.homesealimprovementsltd.co.uk](http://www.homesealimprovementsltd.co.uk)



# TIME TO RECLAIM YOUR LOFT SPACE



We are specialists in loft ladders and hatches for easy and safe access to your loft. We also provide boarding, lighting and insulation solutions. This 'Spring Clean' time we can help you turn your lost space into really useful loft space.



## WHAT MAKES US DIFFERENT

- No waiting around. We arrive on time, every time
- Lifetime Guarantee
- Reliable, local company working in your home
- Extra confidence because we are accredited by Which? Trusted Traders
- Absolutely no mess and no fuss



Call Ricardo to book a FREE survey & quotation [WWW.ACCESS4LOFTS.CO.UK](http://WWW.ACCESS4LOFTS.CO.UK)

# 02476 991201



# Guitar Tuition

with **Angelo Berté** BA (Hons) PGCE  
Experienced and qualified tutor for all levels & styles.

Theory, Practical and Ear Training  
Exams in Classical, Bass & Electric Guitar  
Evening, Weekend or Daytime Lessons  
All abilities, ages and music styles catered for.

Learn in comfort in your own home

**Electric**  
**Acoustic**  
**Classical**

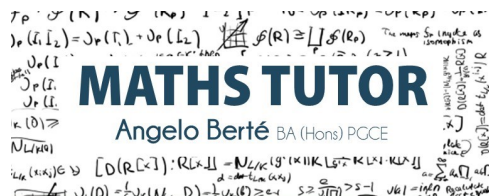


**01926 490 579 ~ 07731 640 281**

[angeloberte@hotmail.co.uk](mailto:angeloberte@hotmail.co.uk)

[www.angeloberte.co.uk](http://www.angeloberte.co.uk)

Member of the Registry of Guitar Tutors Enhanced DBS checked



# MATHS TUTOR

**Angelo Berté** BA (Hons) PGCE

Offered by an experienced and qualified tutor.

*Teach Maths from Key Stage 2  
up to & including A-Level. DBS Checked.*

Structured learning  
Preparation for Entrance Exams  
Thorough knowledge of Exam Boards  
100% Pass Rates  
Mathematics for Adults:  
making a career change or returning  
to education

For an informal discussion please contact

**Angelo Berté** BA (Hons) PGCE

**01926 490579 | 07731 640281**

[angeloberte@hotmail.co.uk](mailto:angeloberte@hotmail.co.uk)

[angelobertemathstuition.com](http://angelobertemathstuition.com)





CREATIVE



ELECTRICAL, FIRE AND SECURITY

YOUR LOCAL

# ELECTRICAL FIRE SECURITY

EXPERT

**24/7**  
**CALL OUT &  
HELP LINE**

**ALL WORK GUARANTEED**  
**OAP DISCOUNTS**  
**SAME DAY QUOTE & SERVICE**

## DISCOVER OUR SERVICES:

- Electrical installation, testing and maintenance
- Extra sockets, lights and replacement fittings etc.
- Fire alarm installation and maintenance
- Security alarm installation, repairs, maintenance bill reductions, and monitoring (insurance purposes)
- Security lighting
- Smart alarm installation supplied & fitted from £475+VAT
- Hikvision CCTV installation from £575 +VAT
- Free security survey on a property, looking at locks & access
- Engineer on site within 8 hours
- No job is too big or too small

📞 Office: **02475 901 268**

📠 Emergency Call-Out: **07510 749 733**

@ **caseyholcroft@creativeelectricalsecurity.com**

📍 Unit 8 | Redland Close | CV2 2NP



# Rightio Plumbing & Heating

01926 706 082

We work all over  
**Kenilworth** and  
all surrounding  
areas.

## COMPETITIVE RATES

- ✓ Fast Response
- ✓ All Work Guaranteed
- ✓ Flexible Appointment Times

▶ **12 Month** ◀  
guarantee  
on labour!  
Excludes blockages

▶ **OAP** ◀  
**Discount**  
Speak to  
us today!

▶ **1-2 Hour** ◀  
Emergency  
Response  
time!



## OUR SERVICES

- ✓ Boiler Breakdowns
- ✓ Boiler Servicing
- ✓ Radiators & Pipes
- ✓ Tanks & Cylinders
- ✓ Toilets & Taps
- ✓ Leaks & Bursts
- ✓ Showers
- ✓ Clearing Blockages
- ✓ Pipework Replacement
- ✓ Gas Safe Certified

**CLARENDONCARE**  
AT KENILWORTH MANOR

## Kenilworth Manor Nursing Home

Thickthorn Orchards, Kenilworth, Warwickshire CV8 2AF  
Tel: **01926 858030**  
E: [manager.kenilworthmanor@clarendoncare.co.uk](mailto:manager.kenilworthmanor@clarendoncare.co.uk)  
W: [www.kenilworthmanor.co.uk](http://www.kenilworthmanor.co.uk)

# Projects

## Paving & Landscaping



**Resin Drives**



**Tarmac Drives**



**Block Drives & Paving**



**Luxury Patios**



**Steps**

- ✓ BLOCK DRIVEWAYS & PAVING
- ✓ RESIN DRIVEWAYS
- ✓ TARMAC DRIVEWAYS
- ✓ LUXURY OUTDOOR PATIOS
- ✓ STEPS TO FRONT DOORS
- ✓ DECORATIVE WALLING
- ✓ LANDSCAPING
- ✓ ASTROTURF
- ✓ FENCING



**Astro Turf**

For a FREE, NO OBLIGATION quotation call:

**T: 01926 674 782 M: 07961 358 367**

**projectspaving@icloud.com**

**www.projectspaving.co.uk**

328 Alcester Road, Wythall, Birmingham B47 6JR





KARL STUART  
INTERIORS

ELEVATE YOUR BATHROOM SPACE

*Concept to completion*

DESIGN

PROFESSIONAL INSTALLATION

CUSTOM FURNITURE

WATER PRESSURE & STORAGE SOLUTIONS

WWW.KSINTERIORS.UK | INFO@KSINTERIORS.UK

01676 292 500 | 07988 773 899



CONSERVATORY ROOF SOLUTIONS

**TRANSFORM YOUR EXISTING  
CONSERVATORY INTO A LIVING SPACE  
YOU CAN USE ALL YEAR ROUND**



## CONSERVATORY ROOF REPLACEMENT

Every Ensign conservatory roof is bespoke. Accurately surveyed & precision built in our own factory.

- Large range of lightweight tile colours
- U-value up to 0.12, this is better than current building regulations
- Keylite roof windows
- Electrics & plaster finish

## CONSERVATORY & ORANGERY EXTENSIONS

- Cost effective extensions
- Large range of designs
- LABC approval undertaken
- Average build time 4 weeks

## REPLACEMENT WINDOWS & DOORS USING REHAU TOTAL 70 WINDOW & DOOR SYSTEMS

- Aluminium bi-fold doors
- Composite doors
- Rehau Total 70 Window & Door Systems
- Planitherm Technology sealed units for maximum efficiency
- High security PAS 24 locking systems



CALL TODAY TO BOOK YOUR **FREE**  
NO OBLIGATION SITE SURVEY

**01527 69296**

**[www.ensignroof.co.uk](http://www.ensignroof.co.uk)**

Scan to read our reviews





# TRAVELLING THIS SEPTEMBER?

## FIVE BIG HOLIDAY MISTAKES TO AVOID

*Holidays are a chance to relax, unwind and transport yourself to a different place, mentally and physically.*

*That's why when things go wrong during this special time of the year, it can be disheartening.*

*However, you can steer away from stress by circumnavigating these common holiday horrors.*

### Travel restrictions

You may have a place in mind, but long before concerning yourself over passport, travel insurance and vaccinations, give a final check that your destination is somewhere safe.

Natural disasters, political conflicts and social unrest are just a few of the reasons a place may find itself on the no-go list. Some of these elements may change frequently given we are in fast-moving times.

You can find guidance on the Foreign, Commonwealth and Development Office (FCDO) website and it's worth checking this information often in the weeks leading up to your holiday. In the past the FCDO has issued various travel warnings, including advice against 'all travel' and 'all but essential travel' to entire countries or parts of countries, so don't get caught out.

### Scams

Scam websites on the internet are nothing new, and there is nothing more devastating than paying out for a dream trip only to realise you can't even make it through Passport Control.

To check if a holiday company is legitimate, look for suspicious language, typos, ensure there is clear contact information, website reviews, and

membership in reputable trade bodies like ABTA or IATA. Verify the company's ATOL (Air Travel Organisers' Licence) if it offers flights, and avoid companies that request payment outside of secure systems.

### Delays

Some delays are inevitable, but there are steps you can take to make it less likely. For example, if you're taking a short haul flight on a budget airline, it's best to get the first flight as planes will likely be going to and from mainland Europe several times in one day, so delays can accumulate. Also, download the app of the airline you're travelling with for regular updates.

### Overpaying

Even if the website hollars 'hotel in demand... one room left!!' do not book anything on a whim. Companies often use this as a tactic to pressure customers into booking, but it is always worth checking your options.

Visit price comparison websites, read reviews of hotels so you can be sure it offers the standards promised and, if in doubt, book via a travel agent who will source the best deal.

### Culture clashes

Some countries have different cultures to the UK. In France for example, this often means ladies will sunbathe topless on the beach, however if you try that in some Middle Eastern countries you are likely to get arrested.

Ultimately, it comes down to respect for a location and its people, so take time to ensure a destination matches with your own values, persona and identity.





## Homewood, Leamington Spa

### Residential care home

MHA is a charity with over 75 years' experience providing quality care and supporting families.

#### **Situated in beautiful grounds, we offer:**

- Long-term and respite care
- Personalised care in a safe environment
- En suite bedrooms and home cooked food
- A chaplain, hair salon and lots of activities

Get in touch for more information

**01926 423519**

**[www.mha.org.uk/homewood](http://www.mha.org.uk/homewood)**



# FUN RUN

## JOIN A LOCAL RUNNING CLUB



Getting fit can often feel like a chore. We've all been there - the free weights gathering dust in the corner, the guilt-inducing gym card in your wallet, and those expensive trainers that only make it as far as the local shops!

The truth is, relying on your own steam to get active usually leads to more time on the sofa, which is why joining a running club can be an excellent way to spark that motivation you've been lacking. Offering community, friendship and solidarity, you'll soon be pounding the pavements as your new pals cheer you on.

### **Personal goals**

Before setting out to find a running club, take some time to reflect on your objectives. Are you looking to train for a particular race, improve your pace, or simply keen on enjoying the social aspect?

Your goals will influence the type of club you choose, whether it's focused on competitive training, recreational running, or a mix of both.

### **Seeking your sole mates**

So, you've decided what you want, but how to find it? Of course, there is the online option, with platforms such as Facebook often showing local groups who are seeking new members. You can also check noticeboards in your gym, workplace or adverts in local magazines. Word-of-mouth is also a great way to find a club as you'll get a first-hand account of what to

expect and you will already have a buddy there.

### **Considerations**

If you're just starting out on your fitness journey, there is nothing more soul destroying than being left in the dust. That means, at first, it may be smart not to choose a club that's full of would-be Usain Bolts.

So, research extensively to find the right fit.

Most clubs will have groups based on timings meaning you'll be put with other slow pokes until you've found your footing.

Then, as you pick up your pace, you'll start moving up the ranks. Also, remember to check that the run schedule is convenient for you. Can you commit to the times offered and is it close to your home or workplace? Ensuring ease will help you stick to your new fitness regime.

Finally, be aware of any hidden fees when joining a club. Free trials usually come as standard to allow you to get a feel for whether it is the right option. As there is no need to hire a space, overheads for running clubs are usually low, so query any fees which seem a little excessive.

The reality is, you may need to try out a couple of groups before you find the one that feels right... and when that happens, you'll be unstoppable.





# BALSALL COMMON FUN RUN SUN 14 SEPT.

Our slogan is Walk | Jog | Run | Race  
and we welcome people of all ages  
and abilities.

## YOU CAN SIGN UP FOR:

- Mini Runs 400M (4yrs - 11yrs)
- Junior 5KM (11yrs - 15yrs)
- Family 5KM (up to 2 adults and 3 children)
- Adult 5KM\* & 10KM\*

\*Affiliated runner discount applied to the  
5KM & 10KM runs. Terms & Conditions Apply.

SCAN THE QR CODE BELOW TO  
**BOOK YOUR PLACE**



The Lily Mae Foundation, Registered Charity Number: 1149341



# RESTAURANTS & TAKEAWAYS

Please email  
any updates to  
**stpdirectories@  
hotmail.com**

**The Almanack** *Gastro Pub, British*  
Abbey End CV8 1QJ **01926 353 637**  
**Le Raj Spice** *Bangladeshi, Indian*  
85-87 Abbey End CV8 1QJ **01926 859 774**  
**Sunam Balti House** *Balti*  
57 Abbey End CV8 1QJ **01926 863 073**  
**Lil Greens** *Gastro Pub, British*  
33 Abbey End CV8 1QJ **01926 512 529**  
**Forrest Coffee House** *Café*  
1 The Square CV8 1EF **07792 474026**  
**Coffee on the Corner** *Café*  
16 Warwick Rd, Kenilworth CV8 1HE **07415 650314**  
**Thai Kitchen** *Thai*  
43 Station Rd CV8 1JD **01926 853 963**  
**Ego Mediterranean**  
29 The Square CV8 1EF **01926 864 463**  
**Nur Nur Paradise** *Thai*  
11 Warwick Rd CV8 1HD **01926 962 804**  
**The Rocking Horse Coffee Shop** *Café*  
22 Talisman Square CV8 1JB **01926 856 413**  
**My Greek Station** *Coffee Shop, Greek*  
6 Miller Court, Station Rd CV8 1JD  
**Ale Rooms** *Bar*  
7 Smalley Place CV8 1QG **01926 854585**  
**Sonali** *Indian Takeaway*  
33 Warwick Road CV8 1HN **01926 856300**  
**Indian Edge** *Indian*  
50 Warwick Rd CV8 1HH **01926 850 100**  
**Raffles Restaurant** *Malaysian*  
149 Warwick Road CV8 1HY **01926 864300**  
**The Green Man** *Gastro Pub, British*  
168 Warwick Road CV8 1HS **01926 863 061**  
**The Ark** *Indian*  
29 The Square, CV8 1EF **01926 857 373**  
**Tai Pan** *Chinese Takeaway*  
96 Warwick Road CV8 1HL **01926 512 904**  
**The Full House** *Chinese*  
86 Warwick Road CV8 1HL **01926 864 028**  
**Bear & Ragged Staff** *Gastro Pub, British*  
68 Warwick Rd CV8 1HH **01926 857 980**  
**Mulan** *Chinese*  
78 Priory Rd CV8 1LQ **01926 851 108**  
**Raku 57** *Japanese Restaurant*  
57 Warwick Road CV8 1HN **01926 699 573**  
**The Farthing Gallery & Tearoom** *Café*  
15 High Street CV8 1LY **01926 513244**  
**The Butcher's Bistro** *Wine bar, European*  
16 High Street, Kenilworth, CV8 1LZ **01926 257690**  
**Morning Sunshine** *Café*  
36 Castle Hill CV8 1NB **01926 712191**  
**Morning Sunshine** *Café*  
48 The Square CV8 1EB  
**The Pitt Stop** *Mobile Baked Potato*  
Station Road CV8 1JD **07450 962 224**

**Laurent** *Asian and Steak Fusion Restaurant*  
55 Warwick Road CV8 1HN **01926 289 686**  
**Alfie Grimshaw Fish & Chips**  
94 Priory Road CV8 1LQ **01926 855 326**  
**Chips & Fishes Fish & Chips**  
82 Roseland Road CV8 1GB **01926 853 782**  
**Hong Kong Garden** *Chinese Takeaway*  
6, Oaks Precinct, Caesar Rd CV8 1DP **01926 512 640**  
**The Queen & Castle** *Gastro Pub, English*  
Castle Green CV8 1ND **01926 852 661**  
**Harringtons On The Hill** *Gastro Pub, European*  
42 Castle Hill CV8 1NB **01926 852 074**  
**Time for Tea** *Café*  
40 Castle Hill CV8 1NB **01926 957 991**  
**Clarendon Arms** *Gastro Pub*  
44 Castle Hill CV8 1NB **01926 852 017**  
**The Abbey Field** *Gastropub*  
Clarendon House Hotel, 6 High St, CV8 1LZ **01926 515 450**  
**The Famous Virgins & Castle** *British*  
7 High Street CV8 1LY **01926 853 737**  
**Kenilworth Cantonese** *Chinese Takeaway*  
2 High Street CV8 1LZ **01926 863 390**  
**The Cross** *British*  
16 New Street CV8 2EZ **01926 853 840**  
**School Lane Fish & Chip Shop** *Fish & Chips*  
101 School Lane CV8 1GT **01926 859 490**  
**The Royal Oak Pub** *British*  
36 New Street CV8 2EZ **01926 856906**  
**Engine** *Pub*  
8 Mill End CV8 2HP **01926 853 341**  
**The Wyandotte Inn** *Pub*  
4 Stoneleigh Road CV8 2GD **01926 856 167**  
**The Tiltyard** *British*  
25 Leyes Lane CV8 2DE **01926 851 523**  
**Domino's Pizza** *Pizza Takeaway*  
37 Leyes Lane CV8 1DE **01926 856 888**  
**The Clock Tower** *Café*  
212 Abbey End, Kenilworth CV8 1ED **01926 855 957**  
**Milk & Mocha** *Dessert Parlour*  
43 Warwick Road CV8 1HN **01926 511 444**  
**La Ari Italian** *Deli & Café*  
4 Warwick Road CV8 1HB **07392 339579**  
**Ardens** *Café*  
17 Talisman Square CV8 1JB **02476 422 422**  
**Amante Del Cibo** *Pizza*  
72 Whittemoor Road CV8 2BP **07514 133 944**  
**The Station House** *Bar*  
48 Station Road CV8 1JD **01926 852 300**  
**Charlotte's** *French Café*  
18-20 Warwick Rd. CV8 1HE  
**The Turkish Kitchen** *Turkish*  
72 Warwick Rd. CV8 1HH  
**Fossato Lounge** *Café Bar*  
1 Abbey End CV8 1QH **01926 290 755**



KING HENRY VIII  
SCHOOL

# OPEN MORNING

**Junior and Senior Schools**

Saturday 20 September | 9.30am - 12pm



**BOOK NOW:**  
[kinghenrys.co.uk](http://kinghenrys.co.uk)

# USEFUL LOCAL TELEPHONE NUMBERS

## HELPLINES & HOTLINES

Victim Support Warwick	01926 682 689
Samaritans	0845 790 9090
Consumer Advice	0845 4040 506
Citizens Advice Bureau	01926 457 900
RSPCA	07867 743827 / 0300 1234 999

## MEDICAL

Warwick Hospital	01926 495321
Coventry University Hospital	02476 964000
Pennington Dental Kenilworth	01926 678332
NHS Advice Line / Out of Hours Dental Advice	
111	
Emergency Vets	01926 421465

## UTILITIES

Electricity Power Loss	0800 328 1111
Severn Trent Water	0800 783 4444
Transco Gas Leak	0800 111 999
BT Fault Line	0800 800151

## KENILWORTH TOWN COUNCIL

Town Clerk Miss Maggie Field	01926 859 155
------------------------------	---------------

## TRAVEL


Chiltern Railways	0345 600 516
National Rail Enquiries	03457 48 49 50
West Midlands Trains	0333 311 0039
Bus Travel Line	0871 2002233
Coventry Airport	02476 308601
Birmingham Int' Airport	0871 222 0072

## POLICE

Warwickshire Police	01926 415000
West Midlands Police	0345 1135000
Police Control Room	01926 851 111 Or 101
Warwickshire Fire & Rescue	01926 423231
Crimestoppers	0800 555 111

## LEISURE & SPORTS

The Kenilworth Centre	01926 855 205
Kenilworth Library	0300 555 8171
KMAT Leisure	01926 859 421
Castle Farm Leisure Centre	01926 245 862



### C. Stevens Roofing

*The regions  
Premier Roofing Company*

A family business with over  
50 years experience

- New Roofs
- Flat Roofs
- Leadwork
- Chimneys
- Re-Pointing
- Small Repairs
- UPVC Facias
- Guttering

# 01926 485525

[www.cstevensroofing.co.uk](http://www.cstevensroofing.co.uk)

## GET PAID TO GET FIT!

# JOIN OUR DELIVERY TEAM!



Adults and kids over 13 years old.

Please enquire:

**INFO@STONESTHROWPUBLICATIONS.CO.UK**

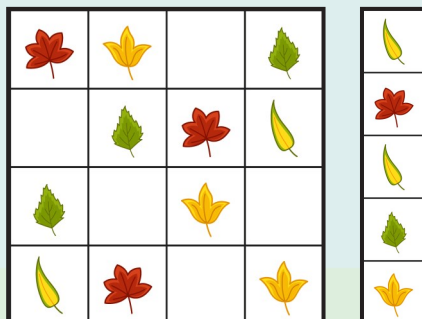




# KIDS PAGE

## PUZZLE GAME: CUT & GLUE

Can you complete the grid so that each row and column has four different leaves in it?



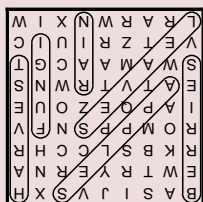
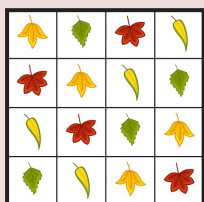
ALL THESE MUSHROOMS HAVE A TWIN EXCEPT ONE. CAN YOU FIND IT?



CAN YOU SOLVE OUR AUTUMN WORD GRID?



ANSWERS:



APPLES | BERRIES | FUNGI  
HARVEST | LEAVES | RAIN



# WHAT'S ON LOCALLY

## **Kenilworth Market**

Date: every Thursday / Time: 9am - 3pm / Venue: Abbey End, Kenilworth

Kenilworth market is a great opportunity to shop in a vibrant open-air setting. You will find variety and value, sold by new and experienced traders. Choose from stalls selling everything from fresh fruit and vegetables, plants, fresh baking, fish and clothing, to gifts & food specialities.

## **Kenilworth Art Society**

Date: Tuesdays / Time: 7.30 - 9.30 pm / Venue: Venue: Waverley Centre, 65 Waverley, Kenilworth, CV8 1JL

A friendly group, with beginners and experienced artists, using a variety of mediums with a programme of optional activities. New members are welcome, to share and learn. For more information [www.kenilworthartsociety.weebly.com](http://www.kenilworthartsociety.weebly.com) [kenilworthartsociety@gmail.com](mailto:kenilworthartsociety@gmail.com); 01926 855470

## **Kenilworth History and Archaeology Society**

Date: second Monday of each month / Time: 7.45pm / Venue: Senior Citizens' Club, Abbey End, Kenilworth CV8 1QJ

We hold nine Open Meetings per year with guest speakers on a range of historical subjects, non-members are welcome for a donation of £2. We also hold three members only meetings per year. Full details of our programme and how to join the society can be found on our website [www.khas.co.uk](http://www.khas.co.uk) and on our Facebook page. The ethos of the society is to research the history of the town and make the results available to its residents.

## **Warwickshire Vision Support Centre**

Date: 2nd Friday of each month / Time: 9.30am - 11.30am / Venue: Kenilworth Senior Citizens Club, Abbey End CV8 1LG

Warwickshire Vision Support are a local charity that supports people living with sight loss in Warwickshire. [www.warwickshire.vision/enquiries@warwickshire.vision](http://www.warwickshire.vision/enquiries@warwickshire.vision) / 01926 411331

## **Rapport Social Group**

Rapport is a non profit making, social group for unattached adults age 50+ on their own and would like to meet new friends. We have a varied monthly programme of hosted events, including coffee mornings, lunches and evening meals, cinema, theatre and National Trust visits, day trips, walks and pub nights. For more information contact Jenny Brown on 07725 094123

## **Kenilworth u3a Meetings**

Time: 2.30pm / Venue: Kenilworth Methodist Church, Priory Road, Kenilworth CV8 1LQ  
Join us for a tea/coffee and a chat from 1.45 pm  
Members free - Visitors £1.

## **Men Walking and Talking**

Date: every Thursday / Time: 7pm / Venue: Abbey Fields Car Park

A weekly walking group has been launched in Kenilworth aimed at supporting men's mental health. Set up by local resident Mark Taylor, the group was started earlier this year as the tenth branch of the Men Walking and Talking Group - which was launched during the pandemic. To join please visit their Facebook page: Men Walking and Talking or contact Mark: [menwalkingandtalking@outlook.com](mailto:menwalkingandtalking@outlook.com)

## **A Walking Football Group**

We meet twice a week, Tuesdays 11.00am and Thursdays 13.15pm at a superb local venue near Warwick University, for exercise, recreation, socializing and a laugh on an outside astro turf pitch. All Adults welcome. For further info contact 07941491488.

## **Independent South Warwickshire NHS Retirement Fellowship**

Date: every 2nd Wednesday / Time: 10am - 12pm / Venue: All Saints Church Hall, All Saints Road, Warwick CV34 5NJ

We have speakers, trips out, quizzes and much more, why not give us a try. Contact Jackie Shaw 01926 492361.

## **Kenilworth Over 30 Swimming Club**

Date: Every Sunday / Time: 8am - 8.55am / Venue: Newbold Comyn, Newbold Terrace East, Leamington Spa, CV32 4EW

We swim at Newbold Comyn whilst the Abbey Fields facility is being rebuilt. Only two members in each of the reserved four lanes to date - new members are welcome (£12.50 a month subscription) a great way to start your day! Please contact Simon: [simonmorton8@yahoo.co.uk](mailto:simonmorton8@yahoo.co.uk) for more details or a trial swim.

## **Coventry And Warwickshire Retired Engineers**

Date: third Thursday of most months / Time: 10:30 - 11AM / Venue: Dunchurch Village Hall CV22 6PN  
All events are open to the general public. [www.retiredengineers.net](http://www.retiredengineers.net) 01926 490 456

## **Coventry And Warwickshire Schools Liaison Community**

We have speakers on many hot topics and careers. Also activity kits we lend to schools and clubs, all free of charge. [www.schoolsliasoncommunity.net/CWSLC.htm](http://www.schoolsliasoncommunity.net/CWSLC.htm) 01926 490 456

## **Repair Café**

Date: every 3rd Saturday of the month / Time: 2-5pm / Venue: Abbey Hill United Reformed Church, Abbey Hill CV8 1LW  
Repair not replace. If you can carry it or pedal it, we'll have a look at it. Repairs and advice are free, but card or cash donations are welcome. Last repair taken at 4.30pm. For more information please visit: [www.repaircafe-kenilworth.org](http://www.repaircafe-kenilworth.org)

### **Kenilworth Probus Club No 2**

Date: 2nd Tuesday of the month / Time: 10.30am /  
Venue: Clarendon Arms, 44 Castle Hill, Kenilworth  
CV34 1NB  
Kenilworth Probus Club No 2. Is a club for retired  
and semi-retired men. Just come along or  
email: KPC2Contact@gmail.com  
Web: www.kenilworthprobus2.org.uk

### **Kenilworth Lions Club**

Date: 2nd Monday of the month / Venue: Kenilworth  
Sports & Social Club  
Throughout the year we support needy causes in the  
community and with a full social programme, the  
Club is friendly, rewarding and good fun. To find out  
more visit: www.kenilworthlionsclub.co.uk

### **Bad Vibrations Community Choir**

Date: 1st, 3rd and 5th Tuesdays / Time: 6.30pm -  
8pm / Venue: United Reformed Church, Kenilworth  
CV8 1LW  
Love to Sing? Then come and join us.  
No musical experience, ability (or even an audition)  
is needed to join our friendly and inclusive group.  
We sing for the joy of singing, when our choir  
rehearse a varied repertoire with instruction from a  
talented and professional choir master.  
Alternatively, on 2nd/ 4th Tuesday from 7 - 8pm in  
the same venue, we have a Singalong; no  
choirmaster, just singing to great soundtracks from  
the last 50 years. For information:  
www.badvibrations.org.uk; 07778 791365;  
badvken@gmail.com. Come for a FREE trial session.

### **Board Game Hub**

Date: 3rd Sunday of every month / Time: 3-5pm /  
Venue: the Kenilworth Centre  
Stuck in the house all day avoiding the cold? Why  
not join us for board game hub? Bring a game, play  
a game, enjoy and cup of tea and a slice of cake.

### **The Kenilworth Walking Women**

Date: every Tuesday / Time: 7pm / Venue: Abbey  
Fields Car Park  
It's a wonderful opportunity to get some regular  
exercise, get to know some other women from  
Kenilworth, but in a safe walking group. See  
Facebook group page for details and updates.

### **Kenilworth Flower Club**

Date: 1st Thursday of each month / Time: 1.30pm /  
Venue: Kenilworth Methodist Church, Priory Road  
CV8 1LQ  
Flower Demonstrators: May 1st - Andrew Lloyd 'Tis  
The Merry Month'; June 5th - Clare  
Bond 'Sustainable Summer'. For more details please  
contact Diane Cahill on 01926 853907

### **Stratford upon Avon Guild of Weavers, Spinners & Dyers**

Date: 3rd Saturday of the month / Time: 10am -  
3pm / Venue: Stratford Methodist Church Hall, Old  
Town CV37 6BG  
A friendly group, beginners welcome. Talks,  
workshops. www.wsdstratford.blogspot.com  
Or email: wsdstratford@gmail.com

### **Festival of Play**

Date: every Tuesday and Thursday in August / Time:

2-4pm / Venue: St. Nicholas Church, Abbey Fields,  
Kenilworth

This year, instead of a holiday club, we are running a  
Festival of Play every week in August! It's for  
pre-school and primary school children. It's running  
in St Nicholas Church in the Abbey Fields and costs  
£3 per session per child. Contact Heather for more  
information at kids@stnicholaskenilworth.org.uk

### **Summer Fest**

Date: 10th August / Time: 10am—4pm / Venue:  
Parade, Royal Leamington Spa, Warwickshire, CV32  
4BL

Step into a vibrant world of summer magic as The  
Parade is transformed into a oasis of fun. Immerse  
yourself in the mini-pop-up beach, complete with  
buckets & spades for kids to play with. But the true  
heart of the festival lies in the giant market, where  
local artisans and producers showcase their  
remarkable talents. Discover unique handcrafted  
treasures, browse an array of captivating arts and  
crafts, and indulge in the fresh, locally sourced  
produce that celebrates the very best of the season.

### **The BIG Summer Market**

Date: 25th August / Time: 11am—4pm / Venue:  
Warwick Town Centre, Market Place, Warwick, CV34  
4SA

It's going to be an incredible event, perfect for the  
whole family to enjoy. The BIG Summer Market will  
showcase a fantastic variety of arts, crafts,  
and locally-produced goods. From handmade  
treasures to unique artwork, you'll find it all at our  
stalls. Discover the talents of our local artisans and  
take home something truly special. The street food  
area is sure to delight your taste buds with a  
mouthwatering array of delicious treats Indulge in a  
world of flavours, from Indian street food to  
delightful desserts. Kids will love face painting, rides,  
and FREE balloon modelling.

### **Leamington Market**

Date: every Friday / Time: 10am—4pm / Venue:  
Holly Walk, Leamington Spa, Warwickshire, CV32 4LY  
Holly Walk is set to host a brand new weekly  
market in the heart of Leamington Spa! Taking place  
every Friday, the market will showcase a fantastic  
range of local produce – from fresh fruit & veg to  
handmade artisan goods. It's the perfect way  
to shop local, discover something new, and support  
the amazing independent businesses in our  
community. Proudly in partnership with Warwick  
District Council.

### **Autumn Food Festival**

Date: 28th September / Time: 11am—4pm / Venue:  
Warwick Town Centre, Market Place, Warwick, CV34  
4SA

Expect a mouthwatering selection of street  
food, artisan bars, and local produce from talented  
traders across the region. Bring the whole family  
along – there'll be kids' rides & entertainment.

*While we do our best to ensure the accuracy of our listings,  
events may be postponed or cancelled without notice.  
Please confirm with the organiser before making any plans  
for attending events. For your news, events and group  
meetings to be featured free of charge on our What's On  
Page please email Ksenia:  
info@stonesthrowpublications.co.uk*





## ARIES

**(MARCH 21 - APRIL 20)**

Dynamic Mars, your ruler, starts the month off in industrious Virgo, moving to pleasure loving Libra on the 7th. Demanding Aries needs to take some relaxing time off, this is just perfect for the holiday season. Relationships come in to focus later this month, stay alert, there may be some disagreements that need your attention.

## TAURUS

**(APRIL 21 - MAY 21)**

August is an important month as the radiant Sun and communicative Mercury both occupy the fiery and extrovert sign of Leo, suggesting that your creativity is strong and a generous and carefree mood is your cosmic gift. The maverick planet Uranus has just arrived in Gemini, highlighting your financial area, if you have any radical changes in mind, this is the month to get them up and running.

## GEMINI

**(MAY 22 - JUNE 21)**

As the Sun and Mercury pass through the communication sector of your chart during August, you'll be looking at restructuring the way you think and how to expand your horizons. Maverick planet Uranus has just entered your sign, indicating that nothing will ever be the same again - Important opportunities are coming your way and some significant decisions will need to be taken.

## CANCER

**(JUNE 22 - JULY 22)**

During August the Sun and Mercury suggest that some new money making schemes are coming to the forefront; if you use this powerful energy wisely it should leave you feeling successful and prosperous all month. The two beneficial planets Venus and Jupiter are strong in your sign, this is a cosmic gift for you to trust in your abilities and benefit from all the opportunities that come your way.

## LEO

**(JULY 23 - AUGUST 23)**

It's your birthday month and the Sun and Mercury both light up your sign. The 9th brings a challenging full moon in your opposite sign of Aquarius, this offers the opportunity for dramatic change and some of your previous ideas may need reviewing. Love planet Venus and lucky Jupiter are both in sensitive Cancer, be sure to use your intuition when making any necessary changes.

## VIRGO

**(AUGUST 24 - SEPTEMBER 22)**

August looks like a rather changeable month as action planet Mars moves from your sign into balanced Libra on the 7th. This suggests that it's time to take a short break and tune into your inner needs. The Virgo new moon in your sign on the 23rd starts off a whole new cycle and a new phase of action begins after the 26th as Venus arrives in creative Leo.

## LIBRA

**(SEPTEMBER 23 - OCTOBER 23)**

Cosmic blessing are around you during August as Venus, your ruler, and mighty Jupiter light up the highest point of your chart. The radiant Sun and communicative Mercury are strong in Leo, putting the emphasis on friends and social life, just perfect for the holiday season. Dynamic Mars arrives in your sign on the 7th, your vitality should be at a peak.

## SCORPIO

**(OCTOBER 24 - NOVEMBER 22)**

Communication planet Mercury increases the Sun's powerful and creative influence during August, suggesting that it's time to ask yourself two important questions - where do you shine, and what makes you feel really happy and fulfilled? Energy planet Mars, arriving in Libra on the 7th highlights your need to find a better work/life balance and take more time out for yourself.

## SAGITTARIUS

**(NOVEMBER 23 - DECEMBER 21)**

August is an important month as positive planetary activity is higher than ever before. Maverick planet Uranus has just arrived in your opposite sign of Gemini, the cosmic message here is to expect the unexpected! Be sure to push yourself forward and make the most of a surge of self-confidence. The Sun and Mercury are in Leo and both indicate a new surge of creativity.

## CAPRICORN

**(DECEMBER 22 - JANUARY 20)**

August brings your relationships and partnerships to the forefront, some important issues now need your attention. Lucky Jupiter and love planet Venus are shining brightly in this area, indicating that outcomes should be very positive. Action planet Mars changes sign on the 7th, suggesting that it's a good time to embrace new career opportunities.

## AQUARIUS

**(JANUARY 21 - FEBRUARY 18)**

Relationships come to the forefront during August as a long term partnership demands your attention. The Sun and Mercury are both in fiery Leo, indicating that passion, joy and creativity are more important than ever. The full moon in your sign on the 9th is both powerful and illuminating, the opportunity for change is strong this month, but it may be best to keep your options open.

## PISCES

**(FEBRUARY 19 - MARCH 20)**

Relationships come to the forefront during August as a long term partnership demands your attention. The Sun and Mercury are both in fiery Leo, indicating that passion, joy and creativity are more important than ever. The full moon in your sign on the 9th is both powerful and illuminating, the opportunity for change is strong this month, but it may be best to keep your options open.

*Christine Chalklin, Inspirational Astrologer and Life Coach.*

*Take a refreshing new look at the year ahead by booking an astrological reading now. Consultations are available on Skype, Zoom, WhatsApp or telephone.*

*Mobile: 07813 483549 | [www.restyleyourlife.co.uk](http://www.restyleyourlife.co.uk) | [christine\\_chalklin@hotmail.com](mailto:christine_chalklin@hotmail.com)*



## Aquarius Interiors

Premium paints and  
wallpapers from top  
designer brands.



**FARROW&BALL**  
CRAFTSMEN IN PAINT AND PAPER

**Sanderson**

**HARLEQUIN**

**DESIGNERS GUILD**

KENILWORTH Showroom

**Tel: 01926 359096**

COVENTRY Showroom

**Tel: 024 7771 7517**

*New*  
website just launched.

[www.aquariusinteriors.co.uk](http://www.aquariusinteriors.co.uk)

## GET PAID TO GET FIT!

# JOIN OUR DELIVERY TEAM!



We are looking for reliable  
and energetic people to do door to door  
deliveries once every 2 months.  
Adults and kids over 13 years old.

Please enquire:

**INFO@STONESTHROWPUBLICATIONS.CO.UK**

## TRADES ADVERTISE HERE

from just **£26**

+VAT per month

**T: 01926 8000 84**

**M: 075 111 222 45**

**E: [info@stonestrowpublications.co.uk](mailto:info@stonestrowpublications.co.uk)**



# MERCIA CARPETS

*of Kenilworth*

## THE HOUSE OF QUALITY CARPETS

- Carpets, Vinyl Flooring, Carpet Tiles & Laminate
- Cormars, Victorias, Westex, Ulsters & Axminster
- Karndean Flooring
- Free Quotations/Reliable Expert Fitting
- Competitive Prices

Telephone: 01926 857910  
[www.mericiacarpets.co.uk](http://www.mericiacarpets.co.uk)  
43 Abbey End, Kenilworth,  
Warwickshire, CV8 1QJ

*Be inspired!*



# S.J. HOLT

**QUALITY PAINTING & DECORATING**

## FROM SMALL PAINT JOBS TO LARGE HOME RESTORATIONS

- I provide professional painting and decorating services to domestic and commercial customers.
- Light restoration & hand painting of furniture such as chest of drawers, wardrobes, kitchens etc.
- Exterior & Interior work undertaken

For a FREE, NO OBLIGATION quote contact Sam Holt:

**07856 762 879**

**[SJ\\_HOLT@HOTMAIL.CO.UK](mailto:SJ_HOLT@HOTMAIL.CO.UK)**

**[WWW.SJHOLTDECORATORS.CO.UK](http://WWW.SJHOLTDECORATORS.CO.UK)**

 [@sjholtdecorators](https://www.instagram.com/sjholtdecorators)





  
**CLARENDONCARE**  
 AT KENILWORTH MANOR

**Kenilworth Manor Nursing Home**  
 Thickthorn Orchards, Kenilworth, Warwickshire CV8 2AF  
 Tel: **01926 858030**  
 E: [manager.kenilworthmanor@clarendoncare.co.uk](mailto:manager.kenilworthmanor@clarendoncare.co.uk)  
 W: [www.kenilworthmanor.co.uk](http://www.kenilworthmanor.co.uk)


ANDY VEALL

01926 315387



PLUMBING AND HEATING

213264



CENTRAL HEATING   LANDLORDS   GAS SERVICING   PLUMBING   BOILER BREAKDOWN   BATHROOMS

- Gas Installation
- Central Heating
- Boiler breakdowns
- Service & maintenance

- Radiators
- Pumps
- Boiler
- Upgrades and replacements







Andy Veall Plumbing and Heating  
 67 Rugby Road, Leamington Spa, CV32 7HY

T: 01926 315387

Pension  
**TRANSFER**  
Gold Standard

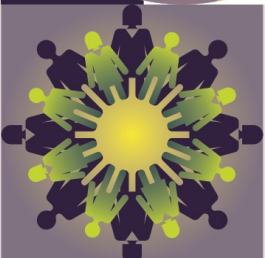


# JAMIESON CHRISTIE CHARTERED FINANCIAL PLANNERS

## TIME FOR A CHANGE?

Talk to us about a review of your previously transferred pension benefits plus

- Retirement planning and pension consolidation
- Tax efficient investing including business sales and inheritance
- Socially responsible investing for growth and/or income
- Inheritance tax and estate planning



***Contact us to learn how we can help.***

Head Office:

Regent House, 430-432 Kenilworth Road,  
Balsall Common CV7 7DN

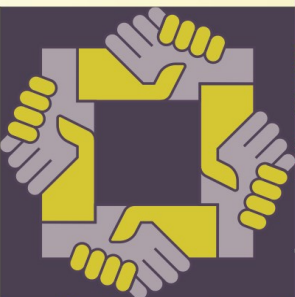
Telephone 01676 532210 / 03300 505040  
mail@jamiesonchristie.com / [www.jamiesonchristie.com](http://www.jamiesonchristie.com)

Serving our clients nationwide with offices in  
London, East Midlands and Staffordshire.

Authorised and regulated by the Financial Conduct Authority.

***Tailored financial planning.***

***For now, for the future.***



**Google**  
Customer Reviews  
★★★★★